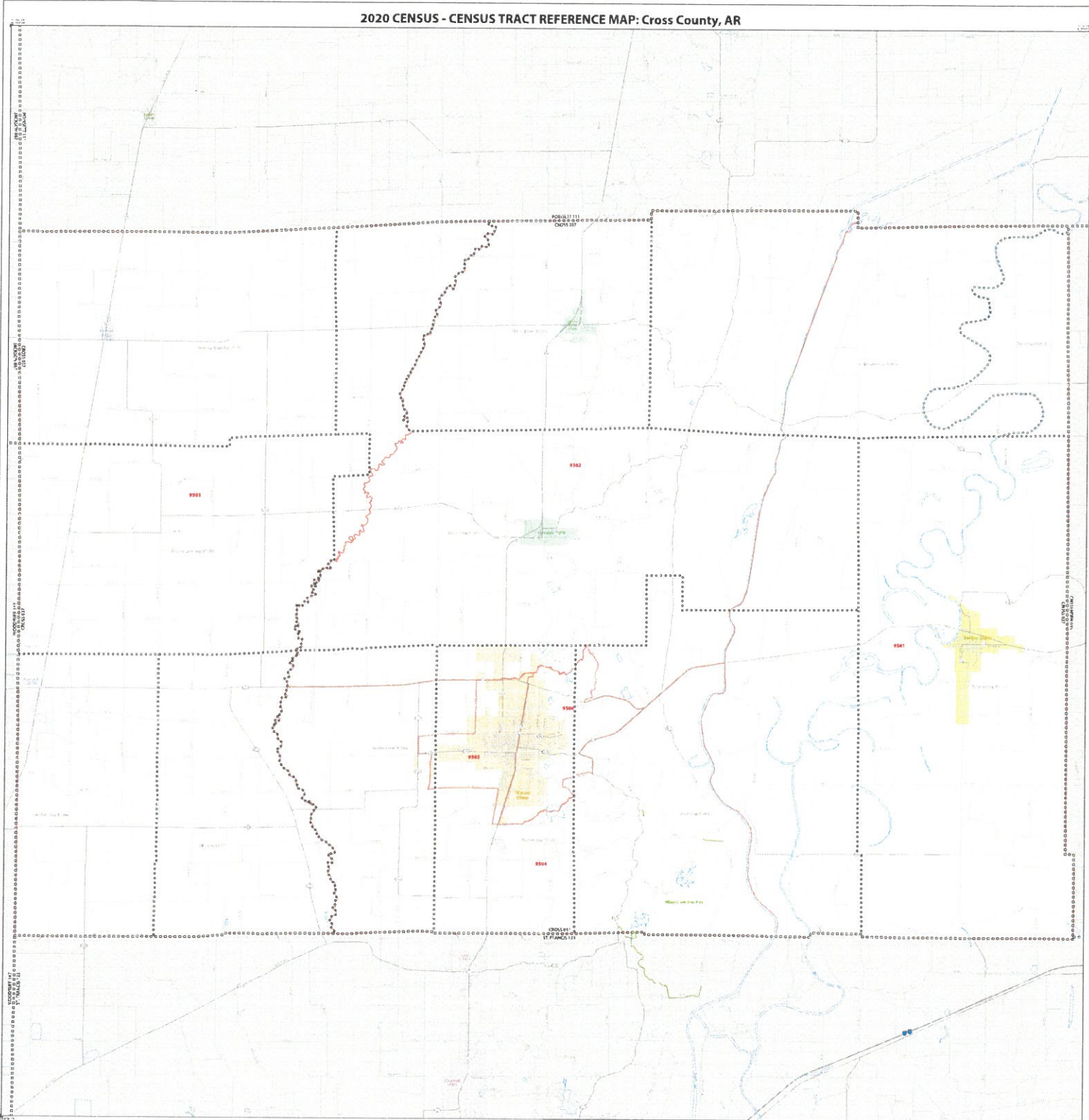


ARKANSAS COUNTY MAP



# 2020 CENSUS - CENSUS TRACT REFERENCE MAP: Cross County, AR



SYMBOL DESCRIPTION	SYMBOL	SYMBOL DESCRIPTION	SYMBOL	SYMBOL DESCRIPTION	SYMBOL
Water		CANADA		Water (Spring)	
1st Class Airport		1990 PREVIOUS BOUNDARY		Water (Flowing)	
2nd Class Airport		2000 PREVIOUS BOUNDARY		Water (Flowing)	
3rd Class Airport		2010 PREVIOUS BOUNDARY		Water (Flowing)	
4th Class Airport		2020 PREVIOUS BOUNDARY		Water (Flowing)	
5th Class Airport		2030 PREVIOUS BOUNDARY		Water (Flowing)	
6th Class Airport		2040 PREVIOUS BOUNDARY		Water (Flowing)	
7th Class Airport		2050 PREVIOUS BOUNDARY		Water (Flowing)	
8th Class Airport		2060 PREVIOUS BOUNDARY		Water (Flowing)	
9th Class Airport		2070 PREVIOUS BOUNDARY		Water (Flowing)	
10th Class Airport		2080 PREVIOUS BOUNDARY		Water (Flowing)	
11th Class Airport		2090 PREVIOUS BOUNDARY		Water (Flowing)	
12th Class Airport		2100 PREVIOUS BOUNDARY		Water (Flowing)	
13th Class Airport		2110 PREVIOUS BOUNDARY		Water (Flowing)	
14th Class Airport		2120 PREVIOUS BOUNDARY		Water (Flowing)	
15th Class Airport		2130 PREVIOUS BOUNDARY		Water (Flowing)	
16th Class Airport		2140 PREVIOUS BOUNDARY		Water (Flowing)	
17th Class Airport		2150 PREVIOUS BOUNDARY		Water (Flowing)	
18th Class Airport		2160 PREVIOUS BOUNDARY		Water (Flowing)	
19th Class Airport		2170 PREVIOUS BOUNDARY		Water (Flowing)	
20th Class Airport		2180 PREVIOUS BOUNDARY		Water (Flowing)	
21st Class Airport		2190 PREVIOUS BOUNDARY		Water (Flowing)	
22nd Class Airport		2200 PREVIOUS BOUNDARY		Water (Flowing)	
23rd Class Airport		2210 PREVIOUS BOUNDARY		Water (Flowing)	
24th Class Airport		2220 PREVIOUS BOUNDARY		Water (Flowing)	
25th Class Airport		2230 PREVIOUS BOUNDARY		Water (Flowing)	
26th Class Airport		2240 PREVIOUS BOUNDARY		Water (Flowing)	
27th Class Airport		2250 PREVIOUS BOUNDARY		Water (Flowing)	
28th Class Airport		2260 PREVIOUS BOUNDARY		Water (Flowing)	
29th Class Airport		2270 PREVIOUS BOUNDARY		Water (Flowing)	
30th Class Airport		2280 PREVIOUS BOUNDARY		Water (Flowing)	
31st Class Airport		2290 PREVIOUS BOUNDARY		Water (Flowing)	
32nd Class Airport		2300 PREVIOUS BOUNDARY		Water (Flowing)	
33rd Class Airport		2310 PREVIOUS BOUNDARY		Water (Flowing)	
34th Class Airport		2320 PREVIOUS BOUNDARY		Water (Flowing)	
35th Class Airport		2330 PREVIOUS BOUNDARY		Water (Flowing)	
36th Class Airport		2340 PREVIOUS BOUNDARY		Water (Flowing)	
37th Class Airport		2350 PREVIOUS BOUNDARY		Water (Flowing)	
38th Class Airport		2360 PREVIOUS BOUNDARY		Water (Flowing)	
39th Class Airport		2370 PREVIOUS BOUNDARY		Water (Flowing)	
40th Class Airport		2380 PREVIOUS BOUNDARY		Water (Flowing)	
41st Class Airport		2390 PREVIOUS BOUNDARY		Water (Flowing)	
42nd Class Airport		2400 PREVIOUS BOUNDARY		Water (Flowing)	
43rd Class Airport		2410 PREVIOUS BOUNDARY		Water (Flowing)	
44th Class Airport		2420 PREVIOUS BOUNDARY		Water (Flowing)	
45th Class Airport		2430 PREVIOUS BOUNDARY		Water (Flowing)	
46th Class Airport		2440 PREVIOUS BOUNDARY		Water (Flowing)	
47th Class Airport		2450 PREVIOUS BOUNDARY		Water (Flowing)	
48th Class Airport		2460 PREVIOUS BOUNDARY		Water (Flowing)	
49th Class Airport		2470 PREVIOUS BOUNDARY		Water (Flowing)	
50th Class Airport		2480 PREVIOUS BOUNDARY		Water (Flowing)	
51st Class Airport		2490 PREVIOUS BOUNDARY		Water (Flowing)	
52nd Class Airport		2500 PREVIOUS BOUNDARY		Water (Flowing)	
53rd Class Airport		2510 PREVIOUS BOUNDARY		Water (Flowing)	
54th Class Airport		2520 PREVIOUS BOUNDARY		Water (Flowing)	
55th Class Airport		2530 PREVIOUS BOUNDARY		Water (Flowing)	
56th Class Airport		2540 PREVIOUS BOUNDARY		Water (Flowing)	
57th Class Airport		2550 PREVIOUS BOUNDARY		Water (Flowing)	
58th Class Airport		2560 PREVIOUS BOUNDARY		Water (Flowing)	
59th Class Airport		2570 PREVIOUS BOUNDARY		Water (Flowing)	
60th Class Airport		2580 PREVIOUS BOUNDARY		Water (Flowing)	
61st Class Airport		2590 PREVIOUS BOUNDARY		Water (Flowing)	
62nd Class Airport		2600 PREVIOUS BOUNDARY		Water (Flowing)	
63rd Class Airport		2610 PREVIOUS BOUNDARY		Water (Flowing)	
64th Class Airport		2620 PREVIOUS BOUNDARY		Water (Flowing)	
65th Class Airport		2630 PREVIOUS BOUNDARY		Water (Flowing)	
66th Class Airport		2640 PREVIOUS BOUNDARY		Water (Flowing)	
67th Class Airport		2650 PREVIOUS BOUNDARY		Water (Flowing)	
68th Class Airport		2660 PREVIOUS BOUNDARY		Water (Flowing)	
69th Class Airport		2670 PREVIOUS BOUNDARY		Water (Flowing)	
70th Class Airport		2680 PREVIOUS BOUNDARY		Water (Flowing)	
71st Class Airport		2690 PREVIOUS BOUNDARY		Water (Flowing)	
72nd Class Airport		2700 PREVIOUS BOUNDARY		Water (Flowing)	
73rd Class Airport		2710 PREVIOUS BOUNDARY		Water (Flowing)	
74th Class Airport		2720 PREVIOUS BOUNDARY		Water (Flowing)	
75th Class Airport		2730 PREVIOUS BOUNDARY		Water (Flowing)	
76th Class Airport		2740 PREVIOUS BOUNDARY		Water (Flowing)	
77th Class Airport		2750 PREVIOUS BOUNDARY		Water (Flowing)	
78th Class Airport		2760 PREVIOUS BOUNDARY		Water (Flowing)	
79th Class Airport		2770 PREVIOUS BOUNDARY		Water (Flowing)	
80th Class Airport		2780 PREVIOUS BOUNDARY		Water (Flowing)	
81st Class Airport		2790 PREVIOUS BOUNDARY		Water (Flowing)	
82nd Class Airport		2800 PREVIOUS BOUNDARY		Water (Flowing)	
83rd Class Airport		2810 PREVIOUS BOUNDARY		Water (Flowing)	
84th Class Airport		2820 PREVIOUS BOUNDARY		Water (Flowing)	
85th Class Airport		2830 PREVIOUS BOUNDARY		Water (Flowing)	
86th Class Airport		2840 PREVIOUS BOUNDARY		Water (Flowing)	
87th Class Airport		2850 PREVIOUS BOUNDARY		Water (Flowing)	
88th Class Airport		2860 PREVIOUS BOUNDARY		Water (Flowing)	
89th Class Airport		2870 PREVIOUS BOUNDARY		Water (Flowing)	
90th Class Airport		2880 PREVIOUS BOUNDARY		Water (Flowing)	
91st Class Airport		2890 PREVIOUS BOUNDARY		Water (Flowing)	
92nd Class Airport		2900 PREVIOUS BOUNDARY		Water (Flowing)	
93rd Class Airport		2910 PREVIOUS BOUNDARY		Water (Flowing)	
94th Class Airport		2920 PREVIOUS BOUNDARY		Water (Flowing)	
95th Class Airport		2930 PREVIOUS BOUNDARY		Water (Flowing)	
96th Class Airport		2940 PREVIOUS BOUNDARY		Water (Flowing)	
97th Class Airport		2950 PREVIOUS BOUNDARY		Water (Flowing)	
98th Class Airport		2960 PREVIOUS BOUNDARY		Water (Flowing)	
99th Class Airport		2970 PREVIOUS BOUNDARY		Water (Flowing)	
100th Class Airport		2980 PREVIOUS BOUNDARY		Water (Flowing)	
101st Class Airport		2990 PREVIOUS BOUNDARY		Water (Flowing)	
102nd Class Airport		3000 PREVIOUS BOUNDARY		Water (Flowing)	



Sheet 1 of 1 PARENT SHEETS  
 Total Sheets: 1 (Index 0: Parent 1, Inset 0)

All legal boundaries and codes are as of December 31, 2019. The boundaries shown on this map are for informational purposes only and do not constitute a warranty of accuracy. The boundaries shown on this map are for informational purposes only and do not constitute a warranty of accuracy. The boundaries shown on this map are for informational purposes only and do not constitute a warranty of accuracy.



2023 FFIEC Census Report - Summary Census Demographic Information  
 State: 05 - ARKANSAS (AR)  
 County: 037 - CROSS COUNTY  
 Tract: All Tracts



State Code	County Code	Tract Code	Tract Income Level	Distressed or Underserved Tract	Tract Median Family Income %	2023 FFIEC Est. MSA/MD non-MSA/MD Median Family Income	2023 Est. Tract Median Family Income	2020 Tract Median Family Income	Tract Population	Tract Minority %	Minority Population	Owner Occupied Units	1-to 4-Family Units
05	037	9501.00	Moderate	No	63.26	\$63,400	\$40,107	\$33,973	1058	60.59	641	275	630
05	037	9502.00	Middle	Yes*	99.80	\$63,400	\$63,273	\$53,599	3150	11.14	351	967	1591
05	037	9503.00	Middle	Yes*	90.18	\$63,400	\$57,174	\$48,432	1355	5.39	73	448	766
05	037	9504.00	Upper	No	132.67	\$63,400	\$84,113	\$71,250	2451	12.24	300	722	1111
05	037	9505.00	Moderate	No	72.15	\$63,400	\$45,743	\$38,750	4408	54.38	2397	778	2008
05	037	9506.00	Upper	No	143.74	\$63,400	\$91,131	\$77,192	4411	22.76	1004	1173	1724
05	037	9999.99	Middle	No	108.25	\$63,400	\$68,631	\$58,133	16833	28.31	4766	4363	7830

\* Will automatically be included in the 2024 Distressed or Underserved Tract List

2023 FFIEC Census Report - Summary Census Housing Information

State: 05 - ARKANSAS (AR)

County: 037 - CROSS COUNTY

Tract: All Tracts



State Code	County Code	Tract Code	Total Housing Units	1- to 4-Family Units	Median House Age (Years)	Inside Principal City?	Owner Occupied Units	Vacant Units	Owner Occupied 1- to 4- Family Units	Renter Occupied Units
05	037	9501.00	657	630	46	No	275	203	275	179
05	037	9502.00	1593	1591	43	No	967	283	967	343
05	037	9503.00	766	766	48	No	448	152	448	166
05	037	9504.00	1111	1111	34	No	722	196	722	193
05	037	9505.00	2066	2008	46	No	778	406	778	882
05	037	9506.00	1792	1724	29	No	1173	177	1173	442
05	037	9999.99	7985	7830	42	No	4363	1417	4363	2205

**2023 FFIEC Census Report - Summary Census Income Information**

**State: 05 - ARKANSAS (AR)**

**County: 037 - CROSS COUNTY**

**Tract: All Tracts**



State Code	County Code	Tract Code	Tract Income Level	2020 MSA/MD Statewide non-MSA/MD Median Family Income	2023 FFIEC Est. MSA/MD non-MSA/MD Median Family Income	% Below Poverty Line	Tract Median Family Income %	2020 Tract Median Family Income	2023 Est. Tract Median Family Income	2020 Tract Median Household Income
05	037	9501.00	Moderate	\$53,702	\$63,400	18.99	63.26	\$33,973	\$40,107	\$24,167
05	037	9502.00	Middle	\$53,702	\$63,400	14.74	99.80	\$53,599	\$63,273	\$47,750
05	037	9503.00	Middle	\$53,702	\$63,400	16.99	90.18	\$48,432	\$57,174	\$43,594
05	037	9504.00	Upper	\$53,702	\$63,400	7.55	132.67	\$71,250	\$84,113	\$67,566
05	037	9505.00	Moderate	\$53,702	\$63,400	21.05	72.15	\$38,750	\$45,743	\$32,248
05	037	9506.00	Upper	\$53,702	\$63,400	21.21	143.74	\$77,192	\$91,131	\$61,563
05	037	9999.99	Middle	\$53,702	\$63,400	17.19	108.25	\$58,133	\$68,631	\$44,379

2023 FFIEC Census Report - Summary Census Population Information

State: 05 - ARKANSAS (AR)

County: 037 - CROSS COUNTY

Tract: All Tracts



State Code	County Code	Tract Code	Tract Population	Tract Minority %	Number of Families	Number of Households	Non-Hisp White Population	Tract Minority Population	American Indian Population	Asian/Hawaiian/Pacific Islander Population	Black Population	Hispanic Population	Other Population/Two or More Races
05	037	9501.00	1058	60.59	197	454	417	641	3	0	573	24	41
05	037	9502.00	3150	11.14	997	1310	2799	351	13	6	168	46	118
05	037	9503.00	1355	5.39	421	614	1282	73	0	0	0	29	44
05	037	9504.00	2451	12.24	781	915	2151	300	0	3	176	39	82
05	037	9505.00	4408	54.38	1059	1660	2011	2397	7	22	2076	111	181
05	037	9506.00	4411	22.76	1130	1615	3407	1004	15	76	658	103	152
05	037	9999.99	16833	28.31	4585	6568	12067	4766	38	107	3651	352	618