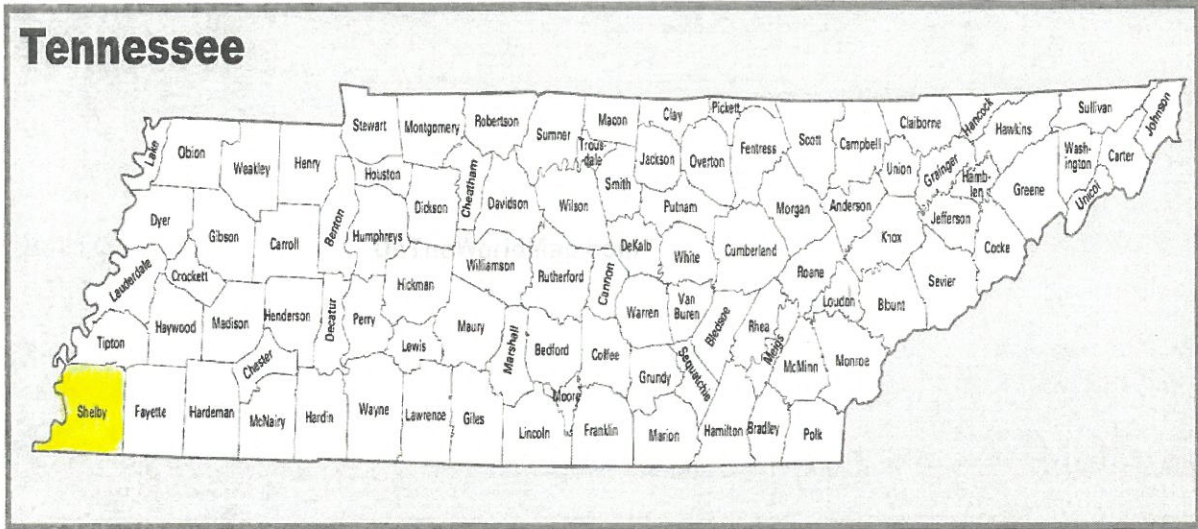
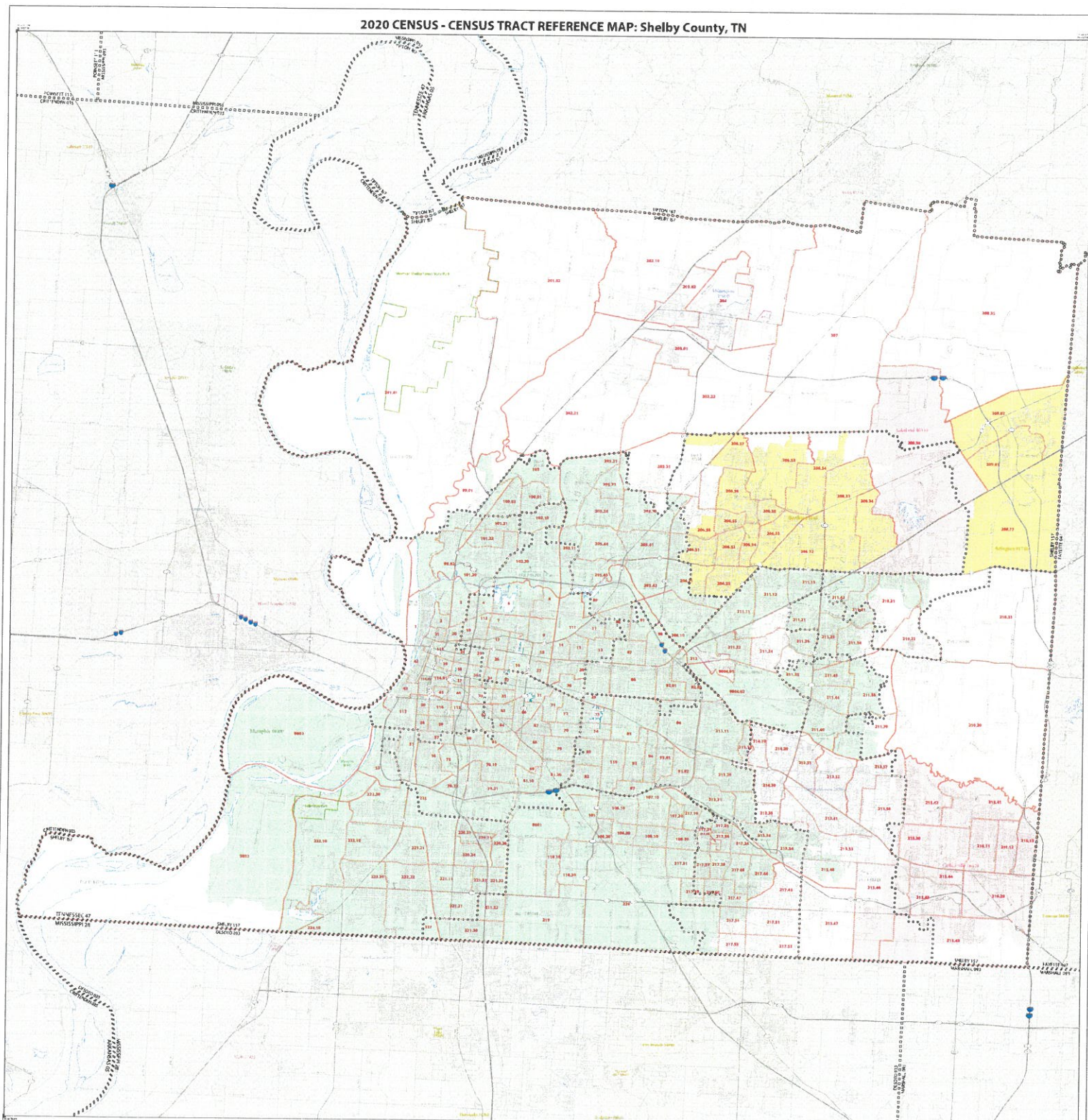


TENNESSEE COUNTY MAP



2020 CENSUS - CENSUS TRACT REFERENCE MAP: Shelby County, TN



SYMBOL	DESCRIPTION	SYMBOL	DESCRIPTION
○ ○ ○ ○ ○	CANADA	■ ■ ■ ■ ■	WATER
■ ■ ■ ■ ■	DEVELOPMENT	■ ■ ■ ■ ■	WATER
■ ■ ■ ■ ■	DEVELOPMENT	■ ■ ■ ■ ■	WATER
■ ■ ■ ■ ■	DEVELOPMENT	■ ■ ■ ■ ■	WATER
■ ■ ■ ■ ■	DEVELOPMENT	■ ■ ■ ■ ■	WATER

LEGEND

WATER

- Water
- Water
- Water
- Water

ROADS

- Interstate
- US Highway
- State Road
- County Road
- Local Road

BOUNDARIES

- County
- City
- Unincorporated Area

SCALE

0 1 2 Miles

When other state, county, and ZIP codes are shown, they are for reference only and do not represent the actual boundaries of the state, county, or ZIP code.

Legend symbols are shown for reference only and do not represent the actual boundaries of the state, county, or ZIP code.

All symbols are shown for reference only and do not represent the actual boundaries of the state, county, or ZIP code.

© 2020 Census Bureau. All rights reserved.

U.S. DEPARTMENT OF COMMERCE, BUREAU OF ECONOMIC ANALYSIS

U.S. GEOGRAPHIC NAME BOARD

U.S. DEPARTMENT OF COMMERCE, BUREAU OF ECONOMIC ANALYSIS

U.S. GEOGRAPHIC NAME BOARD

U.S. DEPARTMENT OF COMMERCE, BUREAU OF ECONOMIC ANALYSIS

U.S. GEOGRAPHIC NAME BOARD

Sheet 1 of 1 PARENT sheets
Total Sheets 1 (Index 0; Parent 1; Inset 0)

NAME: Shelby County (157)
FIPS: 47 Shelby County of Tennessee (157)
STATE: TN



2023 FFIEC Census Report - Summary Census Demographic Information
 State: 47 - TENNESSEE (TN)
 County: 157 - SHELBY COUNTY



State Code	County Code	Tract Code	Tract Income Level	Distressed or Underserved Tract	Tract Median Family Income %	2023 FFIEC Est. MSA/MD non-MSA/MD Median Family Income	2023 Est. Tract Median Family Income	2020 Tract Median Family Income	Tract Population	Tract Minority %	Minority Population	Owner Occupied Units	1- to 4-Family Units
47	157	0001.00	Upper	No	184.95	\$79,200	\$146,480	\$125,786	5821	39.43	2295	1088	1598
47	157	0002.00	Low	No	49.62	\$79,200	\$39,299	\$33,750	1117	97.31	1087	108	323
47	157	0003.00	Moderate	No	51.87	\$79,200	\$41,081	\$35,278	675	98.81	667	124	357
47	157	0004.00	Low	No	46.51	\$79,200	\$36,836	\$31,637	1350	98.96	1336	160	671
47	157	0006.00	Low	No	39.17	\$79,200	\$31,023	\$26,645	1695	99.12	1680	303	1067
47	157	0007.00	Low	No	29.33	\$79,200	\$23,229	\$19,950	4654	91.06	4238	842	1905
47	157	0008.00	Low	No	32.07	\$79,200	\$25,399	\$21,815	1934	98.60	1907	280	741
47	157	0009.00	Moderate	No	58.32	\$79,200	\$46,189	\$39,663	2519	97.22	2449	530	1281
47	157	0011.00	Moderate	No	68.95	\$79,200	\$54,608	\$46,897	3474	81.55	2833	454	1397
47	157	0012.00	Moderate	No	54.74	\$79,200	\$43,354	\$37,231	4101	65.91	2703	710	1552
47	157	0013.00	Low	No	34.98	\$79,200	\$27,704	\$23,791	3676	88.87	3267	516	1500
47	157	0014.00	Low	No	48.11	\$79,200	\$38,103	\$32,721	1426	95.09	1356	191	699
47	157	0015.00	Moderate	No	51.11	\$79,200	\$40,479	\$34,764	1721	85.59	1473	466	853
47	157	0016.00	Upper	No	153.62	\$79,200	\$121,667	\$104,479	3159	37.42	1182	636	806
47	157	0017.00	Middle	No	94.05	\$79,200	\$74,488	\$63,963	3493	55.08	1924	1027	1967
47	157	0019.00	Moderate	No	65.53	\$79,200	\$51,900	\$44,570	1148	98.78	1134	218	626
47	157	0020.00	Low	No	42.49	\$79,200	\$33,652	\$28,900	1578	95.94	1514	230	658
47	157	0021.00	Middle	No	103.27	\$79,200	\$81,790	\$70,234	1422	86.85	1235	166	482
47	157	0024.00	Low	No	38.63	\$79,200	\$30,595	\$26,276	2352	90.31	2124	153	755
47	157	0025.00	Middle	No	116.85	\$79,200	\$92,545	\$79,470	3104	57.89	1797	439	1110
47	157	0026.00	Upper	No	262.03	\$79,200	\$207,528	\$178,207	2441	17.74	433	705	1220
47	157	0027.00	Unknown	No	0.00	\$79,200	\$0	\$0	1774	62.80	1114	417	753
47	157	0028.00	Low	No	27.20	\$79,200	\$21,542	\$18,500	3392	87.59	2971	642	1236
47	157	0029.00	Upper	No	192.17	\$79,200	\$152,199	\$130,691	4882	14.26	696	1810	2419
47	157	0030.00	Moderate	No	68.55	\$79,200	\$54,292	\$46,625	2798	50.61	1416	567	1164
47	157	0031.00	Middle	No	104.39	\$79,200	\$82,677	\$71,000	3598	30.27	1089	829	1304

* Will automatically be included in the 2024 Distressed or Underserved Tract List

State Code	County Code	Tract Code	Tract Income Level	Distressed or Underserved Tract	Tract Median Family Income %	2023 FFIEC Est.MSA/MD non-MSA/MD Median Family Income	2023 Est. Tract Median Family Income	2020 Tract Median Family Income	Tract Population	Tract Minority %	Minority Population	Owner Occupied Units	1- to 4- Family Units
47	157	0032.00	Upper	No	121.67	\$79,200	\$96,363	\$82,750	3783	33.52	1268	579	914
47	157	0033.00	Upper	No	194.83	\$79,200	\$154,305	\$132,500	2146	15.14	325	999	1272
47	157	0034.00	Middle	No	99.49	\$79,200	\$78,796	\$67,664	2065	37.63	777	287	662
47	157	0035.00	Upper	No	212.12	\$79,200	\$167,999	\$144,265	3081	26.91	829	993	1266
47	157	0036.00	Middle	No	105.73	\$79,200	\$83,738	\$71,908	1586	60.40	958	153	361
47	157	0037.00	Low	No	46.77	\$79,200	\$37,042	\$31,813	1291	76.76	991	0	187
47	157	0038.00	Unknown	No	0.00	\$79,200	\$0	\$0	818	75.92	621	0	18
47	157	0039.00	Moderate	No	75.49	\$79,200	\$59,788	\$51,344	1532	85.64	1312	5	214
47	157	0042.00	Upper	No	279.53	\$79,200	\$221,388	\$190,106	3432	40.36	1385	688	229
47	157	0043.00	Upper	No	205.52	\$79,200	\$162,772	\$139,773	3091	46.49	1437	740	539
47	157	0045.00	Unknown	No	0.00	\$79,200	\$0	\$0	831	97.71	812	55	269
47	157	0046.00	Unknown	No	0.00	\$79,200	\$0	\$0	1492	87.60	1307	257	494
47	157	0050.00	Low	No	23.58	\$79,200	\$18,675	\$16,042	1021	98.43	1005	39	231
47	157	0053.00	Low	No	39.87	\$79,200	\$31,577	\$27,115	3023	99.44	3006	521	1628
47	157	0055.00	Moderate	No	51.46	\$79,200	\$40,756	\$35,000	1934	98.71	1909	344	1057
47	157	0056.00	Moderate	No	59.35	\$79,200	\$47,005	\$40,365	3675	99.46	3655	849	1843
47	157	0057.00	Moderate	No	51.50	\$79,200	\$40,788	\$35,030	1921	98.91	1900	307	1057
47	157	0058.00	Moderate	No	61.26	\$79,200	\$48,518	\$41,667	967	99.17	959	82	408
47	157	0059.00	Low	No	40.70	\$79,200	\$32,234	\$27,684	1952	98.77	1928	359	916
47	157	0060.00	Low	No	46.56	\$79,200	\$36,876	\$31,667	1759	98.58	1734	346	954
47	157	0062.00	Moderate	No	65.77	\$79,200	\$52,090	\$44,732	1676	93.97	1575	418	1005
47	157	0063.00	Upper	No	132.99	\$79,200	\$105,328	\$90,444	2182	32.36	706	636	1302
47	157	0064.00	Moderate	No	73.15	\$79,200	\$57,935	\$49,750	1520	92.11	1400	442	780
47	157	0065.00	Moderate	No	57.43	\$79,200	\$45,485	\$39,063	2346	98.76	2317	312	1030
47	157	0066.00	Moderate	No	63.59	\$79,200	\$50,363	\$43,250	2127	46.26	984	357	1399
47	157	0067.00	Low	No	42.82	\$79,200	\$33,913	\$29,125	3023	98.15	2967	351	1487
47	157	0068.00	Moderate	No	51.99	\$79,200	\$41,176	\$35,360	2056	98.83	2032	447	1098
47	157	0069.00	Low	No	38.67	\$79,200	\$30,627	\$26,299	2688	98.81	2656	477	1197
47	157	0070.00	Low	No	39.10	\$79,200	\$30,967	\$26,596	3137	80.87	2537	311	1182

* Will automatically be included in the 2024 Distressed or Underserved Tract List

State Code	County Code	Tract Code	Tract Income Level	Distressed or Underserved Tract	Tract Median Family Income %	2023 FFIEC Est.MSA/MD non-MSA/MD Median Family Income	2023 Est. Tract Median Family Income	2020 Tract Median Family Income	Tract Population	Tract Minority %	Minority Population	Owner Occupied Units	1-to 4-Family Units
47	157	0071.00	Upper	No	284.07	\$79,200	\$224,983	\$193,194	2393	32.64	781	906	1256
47	157	0072.00	Upper	No	211.37	\$79,200	\$167,405	\$143,750	2966	15.64	464	932	1421
47	157	0073.00	Upper	No	138.99	\$79,200	\$110,080	\$94,531	2996	50.83	1523	299	579
47	157	0074.00	Middle	No	90.06	\$79,200	\$71,328	\$61,250	3085	31.64	976	355	1154
47	157	0075.00	Low	No	48.82	\$79,200	\$38,665	\$33,203	1342	99.55	1336	327	721
47	157	0078.10	Low	No	30.45	\$79,200	\$24,116	\$20,714	2747	97.56	2680	399	1214
47	157	0078.21	Moderate	No	62.81	\$79,200	\$49,746	\$42,717	4450	98.58	4387	856	2329
47	157	0078.22	Moderate	No	54.73	\$79,200	\$43,346	\$37,222	1433	94.70	1357	367	572
47	157	0079.00	Moderate	No	59.80	\$79,200	\$47,362	\$40,675	4839	97.04	4696	832	2101
47	157	0080.00	Moderate	No	50.86	\$79,200	\$40,281	\$34,590	4891	80.29	3927	811	1835
47	157	0081.10	Low	No	49.30	\$79,200	\$39,046	\$33,530	1989	98.19	1953	263	681
47	157	0081.20	Moderate	No	57.34	\$79,200	\$45,413	\$39,000	4759	98.13	4670	991	1740
47	157	0082.00	Low	No	38.38	\$79,200	\$30,397	\$26,105	4287	95.12	4078	573	1555
47	157	0085.00	Upper	No	341.84	\$79,200	\$270,737	\$232,480	4447	9.98	444	1415	1527
47	157	0086.00	Upper	No	194.35	\$79,200	\$153,925	\$132,176	6109	25.70	1570	1756	2511
47	157	0087.00	Moderate	No	66.40	\$79,200	\$52,589	\$45,160	5126	54.80	2809	1082	1928
47	157	0088.00	Moderate	No	50.87	\$79,200	\$40,289	\$34,596	7232	75.10	5431	859	2362
47	157	0089.00	Low	No	42.70	\$79,200	\$33,818	\$29,043	4018	81.56	3277	572	1134
47	157	0091.00	Low	No	33.15	\$79,200	\$26,255	\$22,546	2933	70.17	2058	370	890
47	157	0092.01	Upper	No	161.84	\$79,200	\$128,177	\$110,065	3670	18.45	677	1357	1526
47	157	0092.02	Middle	No	119.10	\$79,200	\$94,327	\$81,000	3788	24.23	918	1220	1449
47	157	0093.00	Moderate	No	76.78	\$79,200	\$60,810	\$52,221	4656	34.17	1591	1451	1971
47	157	0094.00	Middle	No	114.77	\$79,200	\$90,898	\$78,058	3141	22.57	709	1168	1666
47	157	0095.01	Middle	No	98.18	\$79,200	\$77,759	\$66,771	2943	21.88	644	946	1400
47	157	0095.02	Upper	No	160.50	\$79,200	\$127,116	\$109,156	3422	14.11	483	1215	1374
47	157	0096.00	Upper	No	239.22	\$79,200	\$189,462	\$162,692	4968	12.16	604	1806	2057
47	157	0097.00	Moderate	No	56.90	\$79,200	\$45,065	\$38,702	3065	81.01	2483	519	1153
47	157	0098.00	Moderate	No	70.91	\$79,200	\$56,161	\$48,229	3483	53.80	1874	590	1067

* Will automatically be included in the 2024 Distressed or Underserved Tract List

State Code	County Code	Tract Code	Tract Income Level	Distressed or Underserved Tract	Tract Median Family Income %	2023 FFIEC Est.MSA/MD non-MSA/MD Median Family Income	2023 Est. Tract Median Family Income	2020 Tract Median Family Income	Tract Population	Tract Minority %	Minority Population	Owner Occupied Units	1- to 4- Family Units
47	157	0099.01	Low	No	47.17	\$79,200	\$37,359	\$32,083	2832	75.53	2139	576	1221
47	157	0099.02	Low	No	24.66	\$79,200	\$19,531	\$16,776	2334	86.93	2029	311	899
47	157	0100.01	Low	No	44.13	\$79,200	\$34,951	\$30,015	3822	96.78	3699	734	1376
47	157	0100.02	Low	No	45.29	\$79,200	\$35,870	\$30,805	3238	94.13	3048	456	1260
47	157	0101.20	Low	No	36.48	\$79,200	\$28,892	\$24,815	5311	91.72	4871	451	1775
47	157	0101.21	Low	No	25.47	\$79,200	\$20,172	\$17,326	3166	93.43	2958	306	928
47	157	0101.22	Middle	No	92.21	\$79,200	\$73,030	\$62,713	2981	94.20	2808	344	839
47	157	0102.10	Moderate	No	66.90	\$79,200	\$52,985	\$45,500	5253	95.03	4992	812	2198
47	157	0102.20	Moderate	No	76.25	\$79,200	\$60,390	\$51,861	6618	92.38	6114	1654	2506
47	157	0103.00	Low	No	38.29	\$79,200	\$30,326	\$26,042	1258	97.38	1225	217	649
47	157	0105.00	Low	No	37.60	\$79,200	\$29,779	\$25,575	1642	91.29	1499	144	569
47	157	0106.10	Low	No	39.46	\$79,200	\$31,252	\$26,840	6086	95.22	5795	733	1951
47	157	0106.20	Moderate	No	52.38	\$79,200	\$41,485	\$35,625	3475	97.90	3402	288	859
47	157	0106.30	Low	No	40.19	\$79,200	\$31,830	\$27,333	4377	97.60	4272	275	810
47	157	0107.10	Moderate	No	64.87	\$79,200	\$51,377	\$44,120	5105	92.67	4731	806	1464
47	157	0107.20	Moderate	No	73.66	\$79,200	\$58,339	\$50,101	4158	94.20	3917	484	974
47	157	0108.10	Moderate	No	75.32	\$79,200	\$59,653	\$51,230	6149	96.32	5923	837	1708
47	157	0108.20	Middle	No	87.30	\$79,200	\$69,142	\$59,375	4270	95.15	4063	1207	1712
47	157	0110.10	Moderate	No	63.90	\$79,200	\$50,609	\$43,462	3913	86.51	3385	916	1505
47	157	0110.20	Moderate	No	67.03	\$79,200	\$53,088	\$45,588	1457	95.47	1391	314	668
47	157	0111.00	Low	No	36.91	\$79,200	\$29,233	\$25,104	1477	98.71	1458	302	955
47	157	0112.00	Low	No	26.03	\$79,200	\$20,616	\$17,708	1373	99.34	1364	170	832
47	157	0113.00	Middle	No	81.10	\$79,200	\$64,231	\$55,156	1285	84.12	1081	133	411
47	157	0114.01	Unknown	No	0.00	\$79,200	\$0	\$0	1188	91.75	1090	14	246
47	157	0114.02	Unknown	No	0.00	\$79,200	\$0	\$0	3499	68.68	2403	26	236
47	157	0115.00	Low	No	39.23	\$79,200	\$31,070	\$26,686	2337	98.84	2310	288	1159
47	157	0116.00	Low	No	28.98	\$79,200	\$22,952	\$19,714	2274	98.42	2238	173	814
47	157	0117.00	Low	No	38.59	\$79,200	\$30,563	\$26,250	1280	98.13	1256	220	484
47	157	0118.00	Middle	No	89.40	\$79,200	\$70,805	\$60,805	5743	73.67	4231	957	2086

* Will automatically be included in the 2024 Distressed or Underserved Tract List

State Code	County Code	Tract Code	Tract Income Level	Distressed or Underserved Tract	Tract Median Family Income %	2023 FFIEC Est. MSA/MD non-MSA/MD Median Family Income	2023 Est. Tract Median Family Income	2020 Tract Median Family Income	Tract Population	Tract Minority %	Minority Population	Owner Occupied Units	1- to 4- Family Units
47	157	0201.01	Moderate	No	71.86	\$79,200	\$56,913	\$48,872	4134	70.71	2923	780	1536
47	157	0201.02	Middle	No	113.09	\$79,200	\$89,567	\$76,914	3095	20.94	648	899	1135
47	157	0202.10	Middle	No	83.70	\$79,200	\$66,290	\$56,927	5867	43.80	2570	1443	2177
47	157	0202.21	Middle	No	89.05	\$79,200	\$70,528	\$60,563	2742	48.83	1339	774	959
47	157	0202.22	Moderate	No	76.52	\$79,200	\$60,604	\$52,045	3168	62.06	1966	582	941
47	157	0203.01	Middle	No	110.05	\$79,200	\$87,160	\$74,847	1920	23.59	453	623	708
47	157	0203.02	Moderate	No	77.73	\$79,200	\$61,562	\$52,868	3507	40.92	1435	505	1365
47	157	0204.00	Middle	No	119.01	\$79,200	\$94,256	\$80,938	976	44.16	431	16	386
47	157	0205.11	Middle	No	105.76	\$79,200	\$83,762	\$71,930	2165	89.15	1930	666	944
47	157	0205.21	Low	No	40.38	\$79,200	\$31,981	\$27,466	3364	95.54	3214	461	1273
47	157	0205.23	Low	No	47.53	\$79,200	\$37,644	\$32,326	3156	93.66	2956	254	1138
47	157	0205.24	Moderate	No	76.77	\$79,200	\$60,802	\$52,214	4795	94.06	4510	928	1817
47	157	0205.31	Moderate	No	79.46	\$79,200	\$62,932	\$54,042	5694	88.20	5022	678	1830
47	157	0205.32	Moderate	No	74.71	\$79,200	\$59,170	\$50,814	6041	87.44	5282	1068	1647
47	157	0205.41	Middle	No	91.30	\$79,200	\$72,310	\$62,095	5479	88.74	4862	678	1643
47	157	0205.42	Low	No	47.76	\$79,200	\$37,826	\$32,487	5237	91.64	4799	276	1094
47	157	0205.43	Low	No	40.26	\$79,200	\$31,886	\$27,382	2938	94.18	2767	339	732
47	157	0205.44	Low	No	43.03	\$79,200	\$34,080	\$29,270	2295	87.89	2017	400	769
47	157	0206.10	Low	No	47.68	\$79,200	\$37,763	\$32,431	4408	80.92	3567	523	1023
47	157	0206.21	Moderate	No	67.16	\$79,200	\$53,191	\$45,675	7036	69.81	4912	1235	1872
47	157	0206.22	Middle	No	102.57	\$79,200	\$81,235	\$69,758	4347	29.15	1267	1177	1465
47	157	0206.32	Upper	No	133.79	\$79,200	\$105,962	\$90,991	5689	24.93	1418	1601	1882
47	157	0206.33	Upper	No	127.98	\$79,200	\$101,360	\$87,042	2920	16.06	469	1010	1277
47	157	0206.34	Upper	No	122.42	\$79,200	\$96,957	\$83,260	2836	19.29	547	998	1094
47	157	0206.35	Middle	No	95.28	\$79,200	\$75,462	\$64,803	2576	18.01	464	917	1018
47	157	0206.51	Middle	No	88.06	\$79,200	\$69,744	\$59,894	6642	48.83	3243	1521	2442
47	157	0206.52	Middle	No	105.53	\$79,200	\$83,580	\$71,773	5230	21.99	1150	1438	1892
47	157	0206.53	Upper	No	155.88	\$79,200	\$123,457	\$106,016	4173	48.21	2012	1398	1411

* Will automatically be included in the 2024 Distressed or Underserved Tract List

State Code	County Code	Tract Code	Tract Income Level	Distressed or Underserved Tract	Tract Median Family Income %	2023 FFIEC Est. MSA/MD non-MSA/MD Median Family Income	2023 Est. Tract Median Family Income	2020 Tract Median Family Income	Tract Population	Tract Minority %	Minority Population	Owner Occupied Units	1- to 4- Family Units
47	157	0206.54	Upper	No	135.36	\$79,200	\$107,205	\$92,059	5138	43.97	2259	1771	2113
47	157	0206.55	Upper	No	133.36	\$79,200	\$105,621	\$90,701	3160	24.68	780	1163	1267
47	157	0206.56	Upper	No	133.48	\$79,200	\$105,716	\$90,783	5147	43.40	2234	1228	1377
47	157	0206.57	Upper	No	128.22	\$79,200	\$101,550	\$87,200	5033	61.79	3110	1231	1789
47	157	0206.58	Middle	No	117.84	\$79,200	\$93,329	\$80,145	5098	72.85	3714	1285	1646
47	157	0207.00	Upper	No	127.43	\$79,200	\$100,925	\$86,667	2547	18.18	463	711	869
47	157	0208.33	Upper	No	173.89	\$79,200	\$137,721	\$118,264	5858	42.57	2494	1585	1766
47	157	0208.34	Upper	No	240.95	\$79,200	\$190,832	\$163,866	3057	27.35	836	1039	1039
47	157	0208.35	Upper	No	138.46	\$79,200	\$109,660	\$94,167	2564	32.25	827	781	882
47	157	0208.36	Upper	No	206.14	\$79,200	\$163,263	\$140,197	8194	24.69	2023	2185	2366
47	157	0208.37	Middle	No	119.66	\$79,200	\$94,771	\$81,384	7686	31.68	2435	2028	2207
47	157	0209.01	Upper	No	147.93	\$79,200	\$117,161	\$100,607	5762	26.33	1517	1017	1270
47	157	0209.02	Upper	No	163.25	\$79,200	\$129,294	\$111,028	6867	24.22	1663	1580	1731
47	157	0210.20	Upper	No	164.34	\$79,200	\$130,157	\$111,768	7444	50.23	3739	1504	1909
47	157	0210.21	Middle	No	119.95	\$79,200	\$95,000	\$81,581	6566	73.03	4795	1141	1670
47	157	0210.22	Middle	No	88.98	\$79,200	\$70,472	\$60,516	6856	73.64	5049	1071	2269
47	157	0210.23	Upper	No	200.09	\$79,200	\$158,471	\$136,081	5247	53.42	2803	2121	2311
47	157	0211.11	Moderate	No	56.46	\$79,200	\$44,716	\$38,401	4120	72.18	2974	542	1279
47	157	0211.12	Moderate	No	77.80	\$79,200	\$61,618	\$52,914	6975	66.71	4653	1388	2250
47	157	0211.13	Upper	No	125.78	\$79,200	\$99,618	\$85,542	3808	65.57	2497	921	1309
47	157	0211.21	Middle	No	82.80	\$79,200	\$65,578	\$56,313	4888	63.42	3100	699	1832
47	157	0211.22	Moderate	No	73.61	\$79,200	\$68,299	\$50,063	5637	68.07	3837	881	1620
47	157	0211.24	Middle	No	100.75	\$79,200	\$79,794	\$68,523	8045	71.45	5748	1472	2646
47	157	0211.25	Middle	No	118.97	\$79,200	\$94,224	\$80,911	4495	55.33	2487	936	1299
47	157	0211.26	Middle	No	111.59	\$79,200	\$88,379	\$75,893	4312	63.20	2725	737	866
47	157	0211.35	Middle	No	100.48	\$79,200	\$79,580	\$68,340	6576	65.18	4286	1102	2232
47	157	0211.36	Upper	No	179.94	\$79,200	\$142,512	\$122,375	5284	62.02	3277	1498	2045
47	157	0211.38	Upper	No	137.93	\$79,200	\$109,241	\$93,807	4213	64.73	2727	863	1206
47	157	0211.39	Upper	No	193.39	\$79,200	\$153,165	\$131,523	4273	45.57	1947	1368	1576

* Will automatically be included in the 2024 Distressed or Underserved Tract List

State Code	County Code	Tract Code	Tract Income Level	Distressed or Underserved Tract	Tract Median Family Income %	2023 FFIEC Est. MSA/MD non-MSA/MD Family Income	2023 Est. Tract Median Family Income	2020 Tract Median Family Income	Tract Population	Tract Minority %	Minority Population	Owner Occupied Units	1- to 4- Family Units
47	157	0211.40	Upper	No	121.60	\$79,200	\$96,307	\$82,700	4740	49.47	2345	1317	1840
47	157	0211.41	Middle	No	112.75	\$79,200	\$89,298	\$76,685	7638	66.92	5111	1932	2541
47	157	0211.42	Upper	No	134.00	\$79,200	\$106,128	\$91,134	3636	53.47	1944	907	1086
47	157	0211.43	Upper	No	124.67	\$79,200	\$98,739	\$84,786	4419	55.99	2474	1405	2000
47	157	0211.44	Middle	No	100.52	\$79,200	\$79,612	\$68,362	3768	61.60	2321	646	931
47	157	0212.00	Unknown	No	0.00	\$79,200	\$0	\$0	1689	70.52	1191	0	0
47	157	0213.11	Upper	No	332.18	\$79,200	\$263,087	\$225,909	4850	19.38	940	1739	1810
47	157	0213.12	Upper	No	156.01	\$79,200	\$123,560	\$106,100	2100	27.62	580	391	894
47	157	0213.20	Upper	No	160.27	\$79,200	\$126,934	\$109,000	5989	32.36	1938	1251	1632
47	157	0213.31	Upper	No	147.80	\$79,200	\$117,058	\$100,519	3500	46.46	1626	1172	1347
47	157	0213.33	Upper	No	126.49	\$79,200	\$100,180	\$86,024	3988	61.33	2446	1047	1491
47	157	0213.34	Upper	No	165.68	\$79,200	\$131,219	\$112,680	3682	76.89	2831	888	1552
47	157	0213.41	Upper	No	241.08	\$79,200	\$190,935	\$163,958	5686	14.93	849	1433	1560
47	157	0213.51	Upper	No	176.63	\$79,200	\$139,891	\$120,129	5273	19.23	1014	1319	1457
47	157	0213.52	Upper	No	209.35	\$79,200	\$165,805	\$142,375	6969	14.78	1030	2302	2559
47	157	0213.54	Middle	No	116.80	\$79,200	\$92,506	\$79,435	6169	74.19	4577	503	1068
47	157	0213.55	Upper	No	199.15	\$79,200	\$157,727	\$135,444	5383	34.87	1877	1362	1517
47	157	0213.56	Upper	No	260.63	\$79,200	\$206,419	\$177,250	4125	19.35	798	1148	1182
47	157	0213.57	Upper	No	286.86	\$79,200	\$227,193	\$195,089	5712	20.78	1187	1985	2030
47	157	0214.10	Upper	No	166.01	\$79,200	\$131,480	\$112,902	2983	12.81	382	1154	1228
47	157	0214.20	Upper	No	193.71	\$79,200	\$153,418	\$131,739	3373	17.55	592	1078	1140
47	157	0214.30	Upper	No	163.32	\$79,200	\$129,349	\$111,076	4103	20.16	827	1411	1562
47	157	0215.30	Upper	No	201.16	\$79,200	\$159,319	\$136,810	5956	24.46	1457	1665	1812
47	157	0215.41	Upper	No	232.81	\$79,200	\$184,386	\$158,333	8296	25.90	2149	2184	2383
47	157	0215.42	Upper	No	319.35	\$79,200	\$252,925	\$217,188	4491	23.87	1072	1599	1644
47	157	0215.43	Upper	No	187.10	\$79,200	\$148,183	\$127,244	4589	65.68	3014	1058	1090
47	157	0215.44	Upper	No	135.59	\$79,200	\$107,387	\$92,218	3294	56.62	1865	419	587
47	157	0215.45	Upper	No	178.88	\$79,200	\$141,673	\$121,654	3524	40.72	1435	859	1205

* Will automatically be included in the 2024 Distressed or Underserved Tract List

State Code	County Code	Tract Code	Tract Income Level	Distressed or Underserved Tract	Tract Median Family Income %	2023 FFIEC Est. MSA/MD non-MSA/MD Median Family Income	2023 Est. Tract Median Family Income	2020 Tract Median Family Income	Tract Population	Tract Minority %	Minority Population	Owner Occupied Units	1- to 4- Family Units
47	157	0215.46	Upper	No	136.30	\$79,200	\$107,950	\$92,701	3770	65.15	2456	369	608
47	157	0215.47	Middle	No	112.28	\$79,200	\$88,926	\$76,364	6507	90.98	5920	1152	1698
47	157	0215.48	Upper	No	120.16	\$79,200	\$95,167	\$81,724	3058	70.18	2146	434	587
47	157	0216.11	Upper	No	173.12	\$79,200	\$137,111	\$117,742	6080	17.11	1040	1758	2046
47	157	0216.12	Upper	No	163.51	\$79,200	\$129,500	\$111,204	4485	10.32	463	1557	1727
47	157	0216.13	Upper	No	158.86	\$79,200	\$125,817	\$108,038	4537	19.11	867	1528	1619
47	157	0216.20	Middle	No	103.22	\$79,200	\$81,750	\$70,202	3067	60.19	1846	508	952
47	157	0217.10	Low	No	39.38	\$79,200	\$31,189	\$26,786	2772	95.49	2647	282	870
47	157	0217.21	Moderate	No	57.06	\$79,200	\$45,192	\$38,812	4860	95.62	4647	215	1155
47	157	0217.24	Moderate	No	71.27	\$79,200	\$56,446	\$48,474	2283	95.18	2173	301	840
47	157	0217.25	Low	No	45.19	\$79,200	\$35,790	\$30,737	3798	96.29	3657	34	910
47	157	0217.31	Moderate	No	61.63	\$79,200	\$48,811	\$41,914	2855	98.11	2801	306	991
47	157	0217.44	Middle	No	96.43	\$79,200	\$76,373	\$65,584	5802	92.64	5375	1611	2246
47	157	0217.45	Upper	No	126.73	\$79,200	\$100,370	\$86,189	8226	92.86	7639	2283	2861
47	157	0217.46	Moderate	No	78.51	\$79,200	\$62,180	\$53,397	4653	94.95	4418	714	1368
47	157	0217.47	Moderate	No	73.21	\$79,200	\$57,982	\$49,795	3985	96.19	3833	944	1361
47	157	0217.51	Upper	No	126.70	\$79,200	\$100,346	\$86,167	7520	95.00	7144	1590	2160
47	157	0217.52	Middle	No	86.81	\$79,200	\$68,754	\$59,038	5080	96.54	4904	991	1621
47	157	0217.53	Middle	No	101.47	\$79,200	\$80,364	\$69,009	3208	94.01	3016	950	1073
47	157	0217.54	Moderate	No	78.86	\$79,200	\$62,457	\$53,636	4343	95.26	4137	989	1675
47	157	0217.55	Moderate	No	63.07	\$79,200	\$49,951	\$42,895	1763	94.33	1663	0	530
47	157	0217.56	Middle	No	106.55	\$79,200	\$84,388	\$72,467	2144	68.80	1475	293	475
47	157	0217.57	Low	No	47.93	\$79,200	\$37,961	\$32,603	3743	97.57	3652	221	919
47	157	0217.58	Moderate	No	51.64	\$79,200	\$40,899	\$35,123	3030	95.48	2893	439	1069
47	157	0217.59	Middle	No	83.54	\$79,200	\$66,164	\$56,818	4194	96.45	4045	627	1533
47	157	0217.60	Moderate	No	78.66	\$79,200	\$62,299	\$53,500	3950	96.35	3806	891	1464
47	157	0219.00	Middle	No	82.34	\$79,200	\$65,213	\$56,000	4929	98.21	4841	935	2070
47	157	0220.23	Moderate	No	79.29	\$79,200	\$62,798	\$53,929	1703	99.06	1687	272	682
47	157	0220.24	Moderate	No	51.46	\$79,200	\$40,756	\$35,000	3246	97.38	3161	758	1101

* Will automatically be included in the 2024 Distressed or Underserved Tract List

State Code	County Code	Tract Code	Tract Income Level	Distressed or Underserved Tract	Tract Median Family Income %	2023 FFIEC Est. MSA/MD non-MSA/MD Median Family Income	2023 Est. Tract Median Family Income	2020 Tract Median Family Income	Tract Population	Tract Minority %	Minority Population	Owner Occupied Units	1- to 4- Family Units
47	157	0220.25	Low	No	28.15	\$79,200	\$22,295	\$19,148	3097	97.35	3015	112	1096
47	157	0220.26	Low	No	33.55	\$79,200	\$26,572	\$22,821	2304	96.66	2227	138	407
47	157	0221.11	Middle	No	80.34	\$79,200	\$63,629	\$54,643	5307	97.98	5200	846	1730
47	157	0221.21	Middle	No	98.14	\$79,200	\$77,727	\$66,745	4267	96.65	4124	1224	1662
47	157	0221.22	Middle	No	83.03	\$79,200	\$65,760	\$56,473	3934	97.99	3855	799	1426
47	157	0221.30	Moderate	No	73.79	\$79,200	\$58,442	\$50,184	4944	97.07	4799	1419	2115
47	157	0221.31	Moderate	No	55.66	\$79,200	\$44,083	\$37,860	2892	98.58	2851	254	487
47	157	0221.32	Moderate	No	78.54	\$79,200	\$62,204	\$53,415	2974	97.44	2898	450	839
47	157	0222.10	Moderate	No	62.08	\$79,200	\$49,167	\$42,222	4280	98.57	4219	1200	1865
47	157	0222.20	Moderate	No	51.98	\$79,200	\$41,168	\$35,352	3418	98.27	3359	761	1863
47	157	0223.10	Low	No	39.99	\$79,200	\$31,672	\$27,197	5479	99.42	5447	829	1906
47	157	0223.21	Moderate	No	55.75	\$79,200	\$44,154	\$37,917	4034	98.93	3991	847	1393
47	157	0223.22	Moderate	No	76.58	\$79,200	\$60,651	\$52,083	3972	98.97	3931	948	1619
47	157	0223.30	Moderate	No	60.27	\$79,200	\$47,734	\$40,993	4607	99.37	4578	1041	1826
47	157	0224.10	Middle	No	89.37	\$79,200	\$70,781	\$60,781	5592	96.19	5379	1808	2458
47	157	0225.00	Moderate	No	66.55	\$79,200	\$52,708	\$45,266	4550	94.86	4316	1118	1804
47	157	0226.00	Moderate	No	69.56	\$79,200	\$55,092	\$47,313	4508	95.21	4292	550	1008
47	157	0227.00	Moderate	No	51.44	\$79,200	\$40,740	\$34,984	6387	98.70	6304	1404	2829
47	157	9801.00	Unknown	No	0.00	\$79,200	\$0	\$0	15	86.67	13	0	0
47	157	9802.00	Unknown	No	0.00	\$79,200	\$0	\$0	11	90.91	10	0	0
47	157	9803.00	Unknown	No	0.00	\$79,200	\$0	\$0	0	0.00	0	0	0
47	157	9804.01	Unknown	No	0.00	\$79,200	\$0	\$0	1829	81.68	1494	0	0
47	157	9804.02	Unknown	No	0.00	\$79,200	\$0	\$0	9	22.22	2	0	0

* Will automatically be included in the 2024 Distressed or Underserved Tract List

2023 FFIEC Census Report - Summary Census Housing Information

State: 47 - TENNESSEE (TN)

County: 157 - SHELBY COUNTY

Tract: All Tracts



State Code	County Code	Tract Code	Total Housing Units	1- to 4-Family Units	Median House Age (Years)	Inside Principal City?	Owner Occupied Units	Vacant Units	Owner Occupied 1- to 4-Family Units	Renter Occupied Units
47	157	0001.00	3442	1598	19	Yes	1088	297	963	2057
47	157	0002.00	523	323	25	Yes	108	110	108	305
47	157	0003.00	421	357	65	Yes	124	133	124	164
47	157	0004.00	785	671	70	Yes	160	228	160	397
47	157	0006.00	1072	1067	67	Yes	303	344	303	425
47	157	0007.00	2525	1905	66	Yes	842	566	842	1117
47	157	0008.00	1053	741	63	Yes	280	119	280	654
47	157	0009.00	1348	1281	69	Yes	530	228	530	590
47	157	0011.00	1407	1397	71	Yes	454	320	454	633
47	157	0012.00	1590	1552	70	Yes	710	186	689	694
47	157	0013.00	1542	1500	75	Yes	516	510	516	516
47	157	0014.00	711	699	60	Yes	191	105	191	415
47	157	0015.00	893	853	77	Yes	466	178	466	249
47	157	0016.00	1044	806	0	Yes	636	108	553	300
47	157	0017.00	2171	1967	0	Yes	1027	270	954	874
47	157	0019.00	691	626	76	Yes	218	197	218	276
47	157	0020.00	797	658	29	Yes	230	110	230	457
47	157	0021.00	781	482	19	Yes	166	62	166	553
47	157	0024.00	1255	755	46	Yes	153	349	147	753
47	157	0025.00	1512	1110	0	Yes	439	300	439	773
47	157	0026.00	1369	1220	0	Yes	705	166	705	498
47	157	0027.00	880	753	73	Yes	417	112	417	351
47	157	0028.00	1788	1236	58	Yes	642	225	513	921
47	157	0029.00	2510	2419	67	Yes	1810	317	1810	383
47	157	0030.00	1687	1164	63	Yes	567	279	408	841
47	157	0031.00	1937	1304	66	Yes	829	208	640	900
47	157	0032.00	2372	914	68	Yes	579	274	524	1519
47	157	0033.00	1341	1272	0	Yes	999	97	930	245
47	157	0034.00	1507	662	78	Yes	287	204	287	1016
47	157	0035.00	1922	1266	0	Yes	993	231	993	698
47	157	0036.00	1238	361	66	Yes	153	253	144	832
47	157	0037.00	964	187	46	Yes	0	157	0	807
47	157	0038.00	586	18	58	Yes	0	78	0	508
47	157	0039.00	1274	214	52	Yes	5	115	0	1154
47	157	0042.00	2586	229	66	Yes	688	416	155	1482
47	157	0043.00	2037	539	15	Yes	740	177	389	1120
47	157	0045.00	480	269	48	Yes	55	43	55	382
47	157	0046.00	859	494	56	Yes	257	127	257	475
47	157	0050.00	427	231	47	Yes	39	67	39	321
47	157	0053.00	1794	1628	69	Yes	521	517	521	756
47	157	0055.00	1377	1057	64	Yes	344	503	344	530
47	157	0056.00	1857	1843	69	Yes	849	297	849	711

State Code	County Code	Tract Code	Total Housing Units	1- to 4-Family Units	Median House Age (Years)	Inside Principal City?	Owner Occupied Units	Vacant Units	Owner Occupied 1- to 4-Family Units	Renter Occupied Units
47	157	0057.00	1135	1057	70	Yes	307	270	307	558
47	157	0058.00	501	408	72	Yes	82	198	82	221
47	157	0059.00	973	916	74	Yes	359	324	359	290
47	157	0060.00	954	954	67	Yes	346	167	346	441
47	157	0062.00	1017	1005	75	Yes	418	334	418	265
47	157	0063.00	1330	1302	0	Yes	636	82	636	612
47	157	0064.00	807	780	70	Yes	442	67	442	298
47	157	0065.00	1233	1030	62	Yes	312	168	312	753
47	157	0066.00	1499	1399	0	Yes	357	157	345	985
47	157	0067.00	1596	1487	62	Yes	351	409	351	836
47	157	0068.00	1166	1098	67	Yes	447	315	447	404
47	157	0069.00	1197	1197	71	Yes	477	230	477	490
47	157	0070.00	1707	1182	64	Yes	311	437	311	959
47	157	0071.00	1256	1256	68	Yes	906	162	906	188
47	157	0072.00	1693	1421	76	Yes	932	99	895	662
47	157	0073.00	1828	579	56	Yes	299	277	202	1252
47	157	0074.00	1504	1154	64	Yes	355	209	355	940
47	157	0075.00	721	721	68	Yes	327	138	327	256
47	157	0078.10	1524	1214	65	Yes	399	530	399	595
47	157	0078.21	3024	2329	65	Yes	856	766	843	1402
47	157	0078.22	680	572	65	Yes	367	87	367	226
47	157	0079.00	2728	2101	62	Yes	832	471	832	1425
47	157	0080.00	2255	1835	62	Yes	811	192	791	1252
47	157	0081.10	1292	681	63	Yes	263	467	256	562
47	157	0081.20	2566	1740	65	Yes	991	377	991	1198
47	157	0082.00	2181	1555	61	Yes	573	421	573	1187
47	157	0085.00	1957	1527	55	Yes	1415	108	1368	434
47	157	0086.00	2775	2511	63	Yes	1756	322	1756	697
47	157	0087.00	2123	1928	64	Yes	1082	79	1082	962
47	157	0088.00	2437	2362	66	Yes	859	410	859	1168
47	157	0089.00	1615	1134	61	Yes	572	355	572	688
47	157	0091.00	1007	890	62	Yes	370	45	370	592
47	157	0092.01	1559	1526	63	Yes	1357	127	1341	75
47	157	0092.02	1724	1449	54	Yes	1220	52	1207	452
47	157	0093.00	2254	1971	62	Yes	1451	276	1373	527
47	157	0094.00	1765	1666	0	Yes	1168	117	1168	480
47	157	0095.01	1419	1400	63	Yes	946	79	946	394
47	157	0095.02	1530	1374	58	Yes	1215	190	1134	125
47	157	0096.00	2207	2057	51	Yes	1806	206	1752	195
47	157	0097.00	1203	1153	61	Yes	519	153	519	531
47	157	0098.00	1197	1067	64	Yes	590	191	590	416
47	157	0099.01	1328	1221	62	Yes	576	201	576	551
47	157	0099.02	1313	899	55	Yes	311	445	311	557
47	157	0100.01	1527	1376	48	Yes	734	155	734	638
47	157	0100.02	1434	1260	61	Yes	456	150	456	828
47	157	0101.20	2428	1775	57	Yes	451	684	451	1293

State Code	County Code	Tract Code	Total Housing Units	1- to 4-Family Units	Median House Age (Years)	Inside Principal City?	Owner Occupied Units	Vacant Units	Owner Occupied 1- to 4-Family Units	Renter Occupied Units
47	157	0101.21	1469	928	59	Yes	306	684	306	479
47	157	0101.22	1673	839	56	Yes	344	859	344	470
47	157	0102.10	2358	2198	54	Yes	812	430	812	1116
47	157	0102.20	2895	2506	51	Yes	1654	129	1654	1112
47	157	0103.00	714	649	52	Yes	217	173	217	324
47	157	0105.00	1377	569	50	Yes	144	761	144	472
47	157	0106.10	2391	1951	50	Yes	733	429	733	1229
47	157	0106.20	1606	859	46	Yes	288	357	288	961
47	157	0106.30	1855	810	45	Yes	275	579	275	1001
47	157	0107.10	1476	1464	55	Yes	806	94	806	576
47	157	0107.20	1654	974	48	Yes	484	165	484	1005
47	157	0108.10	2347	1708	50	Yes	837	303	826	1207
47	157	0108.20	1832	1712	50	Yes	1207	162	1181	463
47	157	0110.10	1505	1505	54	Yes	916	228	916	361
47	157	0110.20	1031	668	43	Yes	314	437	314	280
47	157	0111.00	955	955	56	Yes	302	199	302	454
47	157	0112.00	856	832	67	Yes	170	287	170	399
47	157	0113.00	917	411	68	Yes	133	197	109	587
47	157	0114.01	596	246	16	Yes	14	91	14	491
47	157	0114.02	1129	236	31	Yes	26	194	13	909
47	157	0115.00	1321	1159	66	Yes	288	396	272	637
47	157	0116.00	1145	814	65	Yes	173	307	173	665
47	157	0117.00	544	484	62	Yes	220	117	220	207
47	157	0118.00	2228	2086	63	Yes	957	280	957	991
47	157	0201.01	1536	1536	46	Yes	780	306	780	450
47	157	0201.02	1135	1135	35	No	899	48	899	188
47	157	0202.10	2353	2177	42	No	1443	143	1443	767
47	157	0202.21	1009	959	42	Yes	774	62	774	173
47	157	0202.22	941	941	30	No	582	102	582	257
47	157	0203.01	708	708	47	No	623	0	623	85
47	157	0203.02	1618	1365	61	No	505	456	505	657
47	157	0204.00	404	386	50	No	16	84	16	304
47	157	0205.11	951	944	55	Yes	666	139	666	146
47	157	0205.21	1587	1273	42	Yes	461	284	461	842
47	157	0205.23	1500	1138	32	Yes	254	393	254	853
47	157	0205.24	1817	1817	45	Yes	928	190	928	699
47	157	0205.31	1830	1830	24	Yes	678	173	678	979
47	157	0205.32	2435	1647	34	Yes	1068	127	1033	1240
47	157	0205.41	1947	1643	49	Yes	678	347	678	922
47	157	0205.42	2642	1094	37	Yes	276	396	276	1970
47	157	0205.43	1831	732	44	Yes	339	343	339	1149
47	157	0205.44	1500	769	53	Yes	400	459	400	641
47	157	0206.10	1763	1023	41	Yes	523	167	509	1073
47	157	0206.21	3158	1872	42	Yes	1235	86	1215	1837
47	157	0206.22	1879	1465	43	Yes	1177	198	1177	504
47	157	0206.32	1882	1882	29	Yes	1601	44	1601	237

State Code	County Code	Tract Code	Total Housing Units	1- to 4-Family Units	Median House Age (Years)	Inside Principal City?	Owner Occupied Units	Vacant Units	Owner Occupied 1- to 4- Family Units	Renter Occupied Units
47	157	0206.33	1298	1277	29	No	1010	110	1010	178
47	157	0206.34	1117	1094	28	No	998	22	998	97
47	157	0206.35	1018	1018	45	No	917	30	917	71
47	157	0206.51	2499	2442	46	Yes	1521	160	1521	818
47	157	0206.52	1937	1892	38	No	1438	156	1438	343
47	157	0206.53	1411	1411	18	No	1398	0	1398	13
47	157	0206.54	2113	2113	21	No	1771	0	1771	342
47	157	0206.55	1267	1267	27	No	1163	23	1163	81
47	157	0206.56	1806	1377	24	No	1228	70	1228	508
47	157	0206.57	1789	1789	21	No	1231	120	1231	438
47	157	0206.58	1904	1646	35	Yes	1285	52	1285	567
47	157	0207.00	869	869	27	No	711	68	711	90
47	157	0208.33	1766	1766	19	Yes	1585	0	1585	181
47	157	0208.34	1298	1039	27	No	1039	0	1039	259
47	157	0208.35	882	882	41	No	781	57	781	44
47	157	0208.36	2366	2366	16	No	2185	39	2185	142
47	157	0208.37	2557	2207	26	Yes	2028	54	2028	475
47	157	0209.01	1407	1270	15	No	1017	0	1017	390
47	157	0209.02	1731	1731	14	No	1580	43	1580	108
47	157	0210.20	1993	1909	16	No	1504	132	1504	357
47	157	0210.21	2022	1670	18	Yes	1141	223	1141	658
47	157	0210.22	2390	2269	15	No	1071	200	1071	1119
47	157	0210.23	2790	2311	20	Yes	2121	249	2121	420
47	157	0211.11	1745	1279	36	Yes	542	63	542	1140
47	157	0211.12	2460	2250	35	Yes	1388	128	1388	944
47	157	0211.13	1656	1309	25	Yes	921	73	921	662
47	157	0211.21	2963	1832	30	Yes	699	148	688	2116
47	157	0211.22	2324	1620	42	Yes	881	215	881	1228
47	157	0211.24	2966	2646	22	Yes	1472	249	1472	1245
47	157	0211.25	1918	1299	27	Yes	936	37	916	945
47	157	0211.26	2123	866	25	Yes	737	86	737	1300
47	157	0211.35	2788	2232	28	Yes	1102	303	1084	1383
47	157	0211.36	2045	2045	22	Yes	1498	59	1498	488
47	157	0211.38	1429	1206	18	Yes	863	52	863	514
47	157	0211.39	1576	1576	25	Yes	1368	54	1368	154
47	157	0211.40	2463	1840	31	Yes	1317	170	1317	976
47	157	0211.41	3067	2541	26	Yes	1932	185	1932	950
47	157	0211.42	1655	1086	37	Yes	907	77	907	671
47	157	0211.43	2000	2000	26	Yes	1405	0	1405	595
47	157	0211.44	1604	931	27	Yes	646	41	646	917
47	157	0212.00	0	0	0	Yes	0	0	0	0
47	157	0213.11	2305	1810	33	Yes	1739	189	1723	377
47	157	0213.12	1168	894	42	Yes	391	81	388	696
47	157	0213.20	2343	1632	46	Yes	1251	193	1190	899
47	157	0213.31	1394	1347	51	Yes	1172	20	1172	202
47	157	0213.33	1700	1491	38	Yes	1047	122	1040	531

State Code	County Code	Tract Code	Total Housing Units	1- to 4-Family Units	Median House Age (Years)	Inside Principal City?	Owner Occupied Units	Vacant Units	Owner Occupied 1- to 4-Family Units	Renter Occupied Units
47	157	0213.34	2168	1552	38	Yes	888	95	870	1185
47	157	0213.41	2214	1560	30	No	1433	100	1433	681
47	157	0213.51	1946	1457	38	No	1319	189	1207	438
47	157	0213.52	2575	2559	40	No	2302	86	2286	187
47	157	0213.54	2993	1068	18	Yes	503	192	503	2298
47	157	0213.55	2168	1517	26	Yes	1362	149	1362	657
47	157	0213.56	1182	1182	25	No	1148	0	1148	34
47	157	0213.57	2030	2030	27	No	1985	13	1985	32
47	157	0214.10	1300	1228	46	Yes	1154	28	1154	118
47	157	0214.20	1273	1140	41	No	1078	26	1071	169
47	157	0214.30	1800	1562	44	Yes	1411	135	1360	254
47	157	0215.30	1909	1812	30	No	1665	43	1665	201
47	157	0215.41	2480	2383	21	No	2184	71	2184	225
47	157	0215.42	1933	1644	23	No	1599	31	1599	303
47	157	0215.43	1090	1090	14	No	1058	0	1058	32
47	157	0215.44	1704	587	15	No	419	390	419	895
47	157	0215.45	1298	1205	9	No	859	0	859	439
47	157	0215.46	1818	608	14	No	369	122	369	1327
47	157	0215.47	2328	1698	16	No	1152	156	1152	1020
47	157	0215.48	1380	587	17	Yes	434	144	434	802
47	157	0216.11	2046	2046	34	No	1758	41	1758	247
47	157	0216.12	1727	1727	35	No	1557	38	1557	132
47	157	0216.13	1619	1619	26	No	1528	20	1528	71
47	157	0216.20	1200	952	52	No	508	52	480	640
47	157	0217.10	1390	870	43	Yes	282	124	249	984
47	157	0217.21	2278	1155	42	Yes	215	404	215	1659
47	157	0217.24	1055	840	41	Yes	301	95	301	659
47	157	0217.25	2710	910	35	Yes	34	465	34	2211
47	157	0217.31	1011	991	44	Yes	306	100	306	605
47	157	0217.44	2246	2246	36	Yes	1611	73	1611	562
47	157	0217.45	2861	2861	26	Yes	2283	131	2283	447
47	157	0217.46	1923	1368	37	Yes	714	186	714	1023
47	157	0217.47	1361	1361	38	Yes	944	70	944	347
47	157	0217.51	2172	2160	23	Yes	1590	144	1590	438
47	157	0217.52	1948	1621	23	No	991	25	991	932
47	157	0217.53	1073	1073	27	No	950	28	950	95
47	157	0217.54	1743	1675	34	Yes	989	88	989	666
47	157	0217.55	1149	530	37	Yes	0	241	0	908
47	157	0217.56	1552	475	37	Yes	293	499	203	760
47	157	0217.57	1769	919	42	Yes	221	346	221	1202
47	157	0217.58	1490	1069	37	Yes	439	20	439	1031
47	157	0217.59	1533	1533	36	Yes	627	142	627	764
47	157	0217.60	1464	1464	43	Yes	891	34	891	539
47	157	0219.00	2088	2070	0	Yes	935	193	935	960
47	157	0220.23	1598	682	55	Yes	272	1017	272	309
47	157	0220.24	1203	1101	60	Yes	758	32	758	413

State Code	County Code	Tract Code	Total Housing Units	1- to 4-Family Units	Median House Age (Years)	Inside Principal City?	Owner Occupied Units	Vacant Units	Owner Occupied 1- to 4- Family Units	Renter Occupied Units
47	157	0220.25	1773	1096	55	Yes	112	582	112	1079
47	157	0220.26	872	407	54	Yes	138	263	138	471
47	157	0221.11	2665	1730	53	Yes	846	249	846	1570
47	157	0221.21	1789	1662	52	Yes	1224	149	1224	416
47	157	0221.22	2012	1426	52	Yes	799	372	799	841
47	157	0221.30	2315	2115	56	Yes	1419	275	1419	621
47	157	0221.31	1330	487	54	Yes	254	140	254	936
47	157	0221.32	1472	839	53	Yes	450	156	450	866
47	157	0222.10	1869	1865	54	Yes	1200	263	1196	406
47	157	0222.20	1982	1863	64	Yes	761	488	761	733
47	157	0223.10	2125	1906	50	Yes	829	216	829	1080
47	157	0223.21	1510	1393	56	Yes	847	177	847	486
47	157	0223.22	1619	1619	58	Yes	948	174	948	497
47	157	0223.30	1851	1826	57	Yes	1041	132	1041	678
47	157	0224.10	2501	2458	52	Yes	1808	265	1808	428
47	157	0225.00	2018	1804	55	Yes	1118	308	1118	592
47	157	0226.00	1677	1008	44	Yes	550	365	517	762
47	157	0227.00	3102	2829	49	Yes	1404	227	1404	1471
47	157	9801.00	0	0	0	Yes	0	0	0	0
47	157	9802.00	0	0	0	Yes	0	0	0	0
47	157	9803.00	0	0	0	Yes	0	0	0	0
47	157	9804.01	0	0	0	Yes	0	0	0	0
47	157	9804.02	0	0	0	Yes	0	0	0	0

2023 FFIEC Census Report - Summary Census Income Information

State: 47 - TENNESSEE (TN)

County: 157 - SHELBY COUNTY

Tract: All Tracts



State Code	County Code	Tract Code	Tract Income Level	2020 MSA/MD Statewide non-MSA/MD Median Family Income	2023 FFIEC Est. MSA/MD non-MSA/MD Median Family Income	% Below Poverty Line	Tract Median Family Income %	2020 Tract Median Family Income	2023 Est. Tract Median Family Income	2020 Tract Median Household Income
47	157	0001.00	Upper	\$68,008	\$79,200	13.84	184.95	\$125,786	\$146,480	\$72,841
47	157	0002.00	Low	\$68,008	\$79,200	38.32	49.62	\$33,750	\$39,299	\$21,250
47	157	0003.00	Moderate	\$68,008	\$79,200	32.87	51.87	\$35,278	\$41,081	\$19,310
47	157	0004.00	Low	\$68,008	\$79,200	42.66	46.51	\$31,637	\$36,836	\$29,961
47	157	0006.00	Low	\$68,008	\$79,200	39.21	39.17	\$26,645	\$31,023	\$17,546
47	157	0007.00	Low	\$68,008	\$79,200	37.32	29.33	\$19,950	\$23,229	\$19,363
47	157	0008.00	Low	\$68,008	\$79,200	60.06	32.07	\$21,815	\$25,399	\$17,045
47	157	0009.00	Moderate	\$68,008	\$79,200	36.99	58.32	\$39,663	\$46,189	\$24,000
47	157	0011.00	Moderate	\$68,008	\$79,200	38.06	68.95	\$46,897	\$54,608	\$38,363
47	157	0012.00	Moderate	\$68,008	\$79,200	16.22	54.74	\$37,231	\$43,354	\$37,145
47	157	0013.00	Low	\$68,008	\$79,200	51.28	34.98	\$23,791	\$27,704	\$23,586
47	157	0014.00	Low	\$68,008	\$79,200	32.41	48.11	\$32,721	\$38,103	\$29,914
47	157	0015.00	Moderate	\$68,008	\$79,200	21.87	51.11	\$34,764	\$40,479	\$32,015
47	157	0016.00	Upper	\$68,008	\$79,200	16.15	153.62	\$104,479	\$121,667	\$74,167
47	157	0017.00	Middle	\$68,008	\$79,200	5.18	94.05	\$63,963	\$74,488	\$61,622
47	157	0019.00	Moderate	\$68,008	\$79,200	31.01	65.53	\$44,570	\$51,900	\$0
47	157	0020.00	Low	\$68,008	\$79,200	37.49	42.49	\$28,900	\$33,652	\$31,776
47	157	0021.00	Middle	\$68,008	\$79,200	31.83	103.27	\$70,234	\$81,790	\$36,688
47	157	0024.00	Low	\$68,008	\$79,200	34.08	38.63	\$26,276	\$30,595	\$21,037
47	157	0025.00	Middle	\$68,008	\$79,200	34.94	116.85	\$79,470	\$92,545	\$28,462
47	157	0026.00	Upper	\$68,008	\$79,200	6.71	262.03	\$178,207	\$207,528	\$100,804
47	157	0027.00	Unknown	\$68,008	\$79,200	31.68	0.00	\$0	\$0	\$40,781
47	157	0028.00	Low	\$68,008	\$79,200	51.10	27.20	\$18,500	\$21,542	\$15,405
47	157	0029.00	Upper	\$68,008	\$79,200	5.68	192.17	\$130,691	\$152,199	\$99,514
47	157	0030.00	Moderate	\$68,008	\$79,200	31.51	68.55	\$46,625	\$54,292	\$24,794
47	157	0031.00	Middle	\$68,008	\$79,200	8.98	104.39	\$71,000	\$82,677	\$50,784
47	157	0032.00	Upper	\$68,008	\$79,200	13.81	121.67	\$82,750	\$96,363	\$40,993
47	157	0033.00	Upper	\$68,008	\$79,200	1.52	194.83	\$132,500	\$154,305	\$97,083
47	157	0034.00	Middle	\$68,008	\$79,200	18.68	99.49	\$67,664	\$78,796	\$34,840
47	157	0035.00	Upper	\$68,008	\$79,200	20.11	212.12	\$144,265	\$167,999	\$82,723
47	157	0036.00	Middle	\$68,008	\$79,200	26.19	105.73	\$71,908	\$83,738	\$31,250
47	157	0037.00	Low	\$68,008	\$79,200	38.42	46.77	\$31,813	\$37,042	\$14,548
47	157	0038.00	Unknown	\$68,008	\$79,200	60.75	0.00	\$0	\$0	\$11,410
47	157	0039.00	Moderate	\$68,008	\$79,200	50.20	75.49	\$51,344	\$59,788	\$14,484
47	157	0042.00	Upper	\$68,008	\$79,200	9.93	279.53	\$190,106	\$221,388	\$75,968
47	157	0043.00	Upper	\$68,008	\$79,200	4.70	205.52	\$139,773	\$162,772	\$84,417
47	157	0045.00	Unknown	\$68,008	\$79,200	69.68	0.00	\$0	\$0	\$15,598
47	157	0046.00	Unknown	\$68,008	\$79,200	32.90	0.00	\$0	\$0	\$22,782
47	157	0050.00	Low	\$68,008	\$79,200	70.33	23.58	\$16,042	\$18,675	\$14,516
47	157	0053.00	Low	\$68,008	\$79,200	43.49	39.87	\$27,115	\$31,577	\$20,085
47	157	0055.00	Moderate	\$68,008	\$79,200	45.81	51.46	\$35,000	\$40,756	\$20,231

State Code	County Code	Tract Code	Tract Income Level	2020 MSA/MD Statewide non-MSA/MD Median Family Income	2023 FFIEC Est. MSA/MD non-MSA/MD Median Family Income	% Below Poverty Line	Tract Median Family Income %	2020 Tract Median Family Income	2023 Est. Tract Median Family Income	2020 Tract Median Household Income
47	157	0056.00	Moderate	\$68,008	\$79,200	28.24	59.35	\$40,365	\$47,005	\$27,240
47	157	0057.00	Moderate	\$68,008	\$79,200	38.49	51.50	\$35,030	\$40,788	\$32,785
47	157	0058.00	Moderate	\$68,008	\$79,200	42.53	61.26	\$41,667	\$48,518	\$22,399
47	157	0059.00	Low	\$68,008	\$79,200	53.59	40.70	\$27,684	\$32,234	\$25,986
47	157	0060.00	Low	\$68,008	\$79,200	29.85	46.56	\$31,667	\$36,876	\$23,477
47	157	0062.00	Moderate	\$68,008	\$79,200	37.80	65.77	\$44,732	\$52,090	\$25,417
47	157	0063.00	Upper	\$68,008	\$79,200	12.34	132.99	\$90,444	\$105,328	\$62,302
47	157	0064.00	Moderate	\$68,008	\$79,200	10.32	73.15	\$49,750	\$57,935	\$43,426
47	157	0065.00	Moderate	\$68,008	\$79,200	39.47	57.43	\$39,063	\$45,485	\$23,173
47	157	0066.00	Moderate	\$68,008	\$79,200	17.40	63.59	\$43,250	\$50,363	\$38,684
47	157	0067.00	Low	\$68,008	\$79,200	39.43	42.82	\$29,125	\$33,913	\$28,159
47	157	0068.00	Moderate	\$68,008	\$79,200	24.54	51.99	\$35,360	\$41,176	\$28,144
47	157	0069.00	Low	\$68,008	\$79,200	43.71	38.67	\$26,299	\$30,627	\$25,144
47	157	0070.00	Low	\$68,008	\$79,200	30.13	39.10	\$26,596	\$30,967	\$23,115
47	157	0071.00	Upper	\$68,008	\$79,200	4.11	284.07	\$193,194	\$224,983	\$109,280
47	157	0072.00	Upper	\$68,008	\$79,200	13.24	211.37	\$143,750	\$167,405	\$76,111
47	157	0073.00	Upper	\$68,008	\$79,200	30.61	138.99	\$94,531	\$110,080	\$25,795
47	157	0074.00	Middle	\$68,008	\$79,200	45.46	90.06	\$61,250	\$71,328	\$31,911
47	157	0075.00	Low	\$68,008	\$79,200	22.15	48.82	\$33,203	\$38,665	\$27,064
47	157	0078.10	Low	\$68,008	\$79,200	57.71	30.45	\$20,714	\$24,116	\$14,832
47	157	0078.21	Moderate	\$68,008	\$79,200	39.97	62.81	\$42,717	\$49,746	\$36,929
47	157	0078.22	Moderate	\$68,008	\$79,200	35.01	54.73	\$37,222	\$43,346	\$26,188
47	157	0079.00	Moderate	\$68,008	\$79,200	28.45	59.80	\$40,675	\$47,362	\$25,678
47	157	0080.00	Moderate	\$68,008	\$79,200	17.96	50.86	\$34,590	\$40,281	\$29,233
47	157	0081.10	Low	\$68,008	\$79,200	42.59	49.30	\$33,530	\$39,046	\$18,368
47	157	0081.20	Moderate	\$68,008	\$79,200	28.50	57.34	\$39,000	\$45,413	\$22,132
47	157	0082.00	Low	\$68,008	\$79,200	39.45	38.38	\$26,105	\$30,397	\$27,727
47	157	0085.00	Upper	\$68,008	\$79,200	3.59	341.84	\$232,480	\$270,737	\$125,795
47	157	0086.00	Upper	\$68,008	\$79,200	5.95	194.35	\$132,176	\$153,925	\$107,941
47	157	0087.00	Moderate	\$68,008	\$79,200	27.34	66.40	\$45,160	\$52,589	\$39,200
47	157	0088.00	Moderate	\$68,008	\$79,200	22.59	50.87	\$34,596	\$40,289	\$38,191
47	157	0089.00	Low	\$68,008	\$79,200	43.98	42.70	\$29,043	\$33,818	\$28,056
47	157	0091.00	Low	\$68,008	\$79,200	55.18	33.15	\$22,546	\$26,255	\$29,750
47	157	0092.01	Upper	\$68,008	\$79,200	1.99	161.84	\$110,065	\$128,177	\$104,630
47	157	0092.02	Middle	\$68,008	\$79,200	10.30	119.10	\$81,000	\$94,327	\$80,179
47	157	0093.00	Moderate	\$68,008	\$79,200	15.55	76.78	\$52,221	\$60,810	\$52,388
47	157	0094.00	Middle	\$68,008	\$79,200	10.13	114.77	\$78,058	\$90,898	\$64,649
47	157	0095.01	Middle	\$68,008	\$79,200	7.71	98.18	\$66,771	\$77,759	\$54,590
47	157	0095.02	Upper	\$68,008	\$79,200	0.24	160.50	\$109,156	\$127,116	\$82,845
47	157	0096.00	Upper	\$68,008	\$79,200	10.64	239.22	\$162,692	\$189,462	\$136,125
47	157	0097.00	Moderate	\$68,008	\$79,200	32.43	56.90	\$38,702	\$45,065	\$35,556
47	157	0098.00	Moderate	\$68,008	\$79,200	22.55	70.91	\$48,229	\$56,161	\$41,991
47	157	0099.01	Low	\$68,008	\$79,200	56.89	47.17	\$32,083	\$37,359	\$35,037
47	157	0099.02	Low	\$68,008	\$79,200	67.11	24.66	\$16,776	\$19,531	\$19,353
47	157	0100.01	Low	\$68,008	\$79,200	40.41	44.13	\$30,015	\$34,951	\$27,083

State Code	County Code	Tract Code	Tract Income Level	2020 MSA/MD Statewide non-MSA/MD Median Family Income	2023 FFIEC Est. MSA/MD non-MSA/MD Median Family Income	% Below Poverty Line	Tract Median Family Income %	2020 Tract Median Family Income	2023 Est. Tract Median Family Income	2020 Tract Median Household Income
47	157	0100.02	Low	\$68,008	\$79,200	32.45	45.29	\$30,805	\$35,870	\$30,308
47	157	0101.20	Low	\$68,008	\$79,200	58.33	36.48	\$24,815	\$28,892	\$23,481
47	157	0101.21	Low	\$68,008	\$79,200	65.24	25.47	\$17,326	\$20,172	\$16,696
47	157	0101.22	Middle	\$68,008	\$79,200	36.32	92.21	\$62,713	\$73,030	\$0
47	157	0102.10	Moderate	\$68,008	\$79,200	26.91	66.90	\$45,500	\$52,985	\$41,125
47	157	0102.20	Moderate	\$68,008	\$79,200	31.47	76.25	\$51,861	\$60,390	\$38,462
47	157	0103.00	Low	\$68,008	\$79,200	60.30	38.29	\$26,042	\$30,326	\$20,125
47	157	0105.00	Low	\$68,008	\$79,200	51.66	37.60	\$25,575	\$29,779	\$20,556
47	157	0106.10	Low	\$68,008	\$79,200	35.53	39.46	\$26,840	\$31,252	\$30,600
47	157	0106.20	Moderate	\$68,008	\$79,200	30.12	52.38	\$35,625	\$41,485	\$31,165
47	157	0106.30	Low	\$68,008	\$79,200	45.31	40.19	\$27,333	\$31,830	\$26,198
47	157	0107.10	Moderate	\$68,008	\$79,200	26.69	64.87	\$44,120	\$51,377	\$42,901
47	157	0107.20	Moderate	\$68,008	\$79,200	31.78	73.66	\$50,101	\$58,339	\$33,695
47	157	0108.10	Moderate	\$68,008	\$79,200	38.20	75.32	\$51,230	\$59,653	\$41,690
47	157	0108.20	Middle	\$68,008	\$79,200	19.68	87.30	\$59,375	\$69,142	\$46,792
47	157	0110.10	Moderate	\$68,008	\$79,200	31.37	63.90	\$43,462	\$50,609	\$44,716
47	157	0110.20	Moderate	\$68,008	\$79,200	28.30	67.03	\$45,588	\$53,088	\$39,118
47	157	0111.00	Low	\$68,008	\$79,200	50.15	36.91	\$25,104	\$29,233	\$16,355
47	157	0112.00	Low	\$68,008	\$79,200	54.50	26.03	\$17,708	\$20,616	\$13,547
47	157	0113.00	Middle	\$68,008	\$79,200	38.58	81.10	\$55,156	\$64,231	\$21,136
47	157	0114.01	Unknown	\$68,008	\$79,200	63.77	0.00	\$0	\$0	\$12,038
47	157	0114.02	Unknown	\$68,008	\$79,200	49.42	0.00	\$0	\$0	\$15,433
47	157	0115.00	Low	\$68,008	\$79,200	54.80	39.23	\$26,686	\$31,070	\$25,551
47	157	0116.00	Low	\$68,008	\$79,200	70.23	28.98	\$19,714	\$22,952	\$14,239
47	157	0117.00	Low	\$68,008	\$79,200	54.04	38.59	\$26,250	\$30,563	\$29,659
47	157	0118.00	Middle	\$68,008	\$79,200	19.97	89.40	\$60,805	\$70,805	\$54,016
47	157	0201.01	Moderate	\$68,008	\$79,200	25.92	71.86	\$48,872	\$56,913	\$47,866
47	157	0201.02	Middle	\$68,008	\$79,200	13.53	113.09	\$76,914	\$89,567	\$73,694
47	157	0202.10	Middle	\$68,008	\$79,200	14.57	83.70	\$56,927	\$66,290	\$44,870
47	157	0202.21	Middle	\$68,008	\$79,200	17.00	89.05	\$60,563	\$70,528	\$50,335
47	157	0202.22	Moderate	\$68,008	\$79,200	7.11	76.52	\$52,045	\$60,604	\$52,550
47	157	0203.01	Middle	\$68,008	\$79,200	0.85	110.05	\$74,847	\$87,160	\$73,673
47	157	0203.02	Moderate	\$68,008	\$79,200	30.81	77.73	\$52,868	\$61,562	\$43,725
47	157	0204.00	Middle	\$68,008	\$79,200	0.82	119.01	\$80,938	\$94,256	\$76,389
47	157	0205.11	Middle	\$68,008	\$79,200	21.59	105.76	\$71,930	\$83,762	\$66,875
47	157	0205.21	Low	\$68,008	\$79,200	35.13	40.38	\$27,466	\$31,981	\$25,784
47	157	0205.23	Low	\$68,008	\$79,200	41.03	47.53	\$32,326	\$37,644	\$31,768
47	157	0205.24	Moderate	\$68,008	\$79,200	15.39	76.77	\$52,214	\$60,802	\$49,216
47	157	0205.31	Moderate	\$68,008	\$79,200	22.99	79.46	\$54,042	\$62,932	\$50,938
47	157	0205.32	Moderate	\$68,008	\$79,200	15.61	74.71	\$50,814	\$59,170	\$42,873
47	157	0205.41	Middle	\$68,008	\$79,200	22.17	91.30	\$62,095	\$72,310	\$51,892
47	157	0205.42	Low	\$68,008	\$79,200	30.01	47.76	\$32,487	\$37,826	\$37,500
47	157	0205.43	Low	\$68,008	\$79,200	32.59	40.26	\$27,382	\$31,886	\$20,533
47	157	0205.44	Low	\$68,008	\$79,200	30.42	43.03	\$29,270	\$34,080	\$28,591
47	157	0206.10	Low	\$68,008	\$79,200	26.02	47.68	\$32,431	\$37,763	\$34,342

State Code	County Code	Tract Code	Tract Income Level	2020 MSA/MD Statewide non-MSA/MD Median Family Income	2023 FFIEC Est. MSA/MD non-MSA/MD Median Family Income	% Below Poverty Line	Tract Median Family Income %	2020 Tract Median Family Income	2023 Est. Tract Median Family Income	2020 Tract Median Household Income
47	157	0206.21	Moderate	\$68,008	\$79,200	10.77	67.16	\$45,675	\$53,191	\$41,629
47	157	0206.22	Middle	\$68,008	\$79,200	3.98	102.57	\$69,758	\$81,235	\$54,078
47	157	0206.32	Upper	\$68,008	\$79,200	2.94	133.79	\$90,991	\$105,962	\$80,948
47	157	0206.33	Upper	\$68,008	\$79,200	2.63	127.98	\$87,042	\$101,360	\$64,922
47	157	0206.34	Upper	\$68,008	\$79,200	10.35	122.42	\$83,260	\$96,957	\$78,622
47	157	0206.35	Middle	\$68,008	\$79,200	15.70	95.28	\$64,803	\$75,462	\$55,882
47	157	0206.51	Middle	\$68,008	\$79,200	11.56	88.06	\$59,894	\$69,744	\$63,211
47	157	0206.52	Middle	\$68,008	\$79,200	8.32	105.53	\$71,773	\$83,580	\$68,498
47	157	0206.53	Upper	\$68,008	\$79,200	7.83	155.88	\$106,016	\$123,457	\$103,267
47	157	0206.54	Upper	\$68,008	\$79,200	2.03	135.36	\$92,059	\$107,205	\$78,085
47	157	0206.55	Upper	\$68,008	\$79,200	0.44	133.36	\$90,701	\$105,621	\$87,153
47	157	0206.56	Upper	\$68,008	\$79,200	0.66	133.48	\$90,783	\$105,716	\$90,598
47	157	0206.57	Upper	\$68,008	\$79,200	9.71	128.22	\$87,200	\$101,550	\$89,673
47	157	0206.58	Middle	\$68,008	\$79,200	4.53	117.84	\$80,145	\$93,329	\$61,250
47	157	0207.00	Upper	\$68,008	\$79,200	4.96	127.43	\$86,667	\$100,925	\$79,213
47	157	0208.33	Upper	\$68,008	\$79,200	4.97	173.89	\$118,264	\$137,721	\$99,722
47	157	0208.34	Upper	\$68,008	\$79,200	0.00	240.95	\$163,866	\$190,832	\$122,500
47	157	0208.35	Upper	\$68,008	\$79,200	10.28	138.46	\$94,167	\$109,660	\$81,444
47	157	0208.36	Upper	\$68,008	\$79,200	3.24	206.14	\$140,197	\$163,263	\$135,250
47	157	0208.37	Middle	\$68,008	\$79,200	7.23	119.66	\$81,384	\$94,771	\$71,729
47	157	0209.01	Upper	\$68,008	\$79,200	0.00	147.93	\$100,607	\$117,161	\$94,654
47	157	0209.02	Upper	\$68,008	\$79,200	6.53	163.25	\$111,028	\$129,294	\$110,056
47	157	0210.20	Upper	\$68,008	\$79,200	8.97	164.34	\$111,768	\$130,157	\$92,555
47	157	0210.21	Middle	\$68,008	\$79,200	4.84	119.95	\$81,581	\$95,000	\$61,657
47	157	0210.22	Middle	\$68,008	\$79,200	10.74	88.98	\$60,516	\$70,472	\$60,349
47	157	0210.23	Upper	\$68,008	\$79,200	22.72	200.09	\$136,081	\$158,471	\$102,195
47	157	0211.11	Moderate	\$68,008	\$79,200	22.46	56.46	\$38,401	\$44,716	\$35,773
47	157	0211.12	Moderate	\$68,008	\$79,200	12.52	77.80	\$52,914	\$61,618	\$44,704
47	157	0211.13	Upper	\$68,008	\$79,200	7.90	125.78	\$85,542	\$99,618	\$64,186
47	157	0211.21	Middle	\$68,008	\$79,200	16.59	82.80	\$56,313	\$65,578	\$38,523
47	157	0211.22	Moderate	\$68,008	\$79,200	22.79	73.61	\$50,063	\$58,299	\$51,398
47	157	0211.24	Middle	\$68,008	\$79,200	5.90	100.75	\$68,523	\$79,794	\$63,269
47	157	0211.25	Middle	\$68,008	\$79,200	12.33	118.97	\$80,911	\$94,224	\$66,820
47	157	0211.26	Middle	\$68,008	\$79,200	7.99	111.59	\$75,893	\$88,379	\$53,704
47	157	0211.35	Middle	\$68,008	\$79,200	7.07	100.48	\$68,340	\$79,580	\$57,482
47	157	0211.36	Upper	\$68,008	\$79,200	2.71	179.94	\$122,375	\$142,512	\$104,295
47	157	0211.38	Upper	\$68,008	\$79,200	7.49	137.93	\$93,807	\$109,241	\$89,869
47	157	0211.39	Upper	\$68,008	\$79,200	1.34	193.39	\$131,523	\$153,165	\$130,234
47	157	0211.40	Upper	\$68,008	\$79,200	5.46	121.60	\$82,700	\$96,307	\$69,245
47	157	0211.41	Middle	\$68,008	\$79,200	5.29	112.75	\$76,685	\$89,298	\$74,133
47	157	0211.42	Upper	\$68,008	\$79,200	4.53	134.00	\$91,134	\$106,128	\$73,750
47	157	0211.43	Upper	\$68,008	\$79,200	0.79	124.67	\$84,786	\$98,739	\$74,906
47	157	0211.44	Middle	\$68,008	\$79,200	11.41	100.52	\$68,362	\$79,612	\$51,036
47	157	0212.00	Unknown	\$68,008	\$79,200	0.00	0.00	\$0	\$0	\$0
47	157	0213.11	Upper	\$68,008	\$79,200	3.29	332.18	\$225,909	\$263,087	\$174,057

State Code	County Code	Tract Code	Tract Income Level	2020 MSA/MD Statewide non-MSA/MD Median Family Income	2023 FFIEC Est. MSA/MD non-MSA/MD Median Family Income	% Below Poverty Line	Tract Median Family Income %	2020 Tract Median Family Income	2023 Est. Tract Median Family Income	2020 Tract Median Household Income
47	157	0213.12	Upper	\$68,008	\$79,200	7.18	156.01	\$106,100	\$123,560	\$55,801
47	157	0213.20	Upper	\$68,008	\$79,200	9.59	160.27	\$109,000	\$126,934	\$78,359
47	157	0213.31	Upper	\$68,008	\$79,200	11.57	147.80	\$100,519	\$117,058	\$86,935
47	157	0213.33	Upper	\$68,008	\$79,200	8.82	126.49	\$86,024	\$100,180	\$84,625
47	157	0213.34	Upper	\$68,008	\$79,200	9.18	165.68	\$112,680	\$131,219	\$65,760
47	157	0213.41	Upper	\$68,008	\$79,200	6.50	241.08	\$163,958	\$190,935	\$110,321
47	157	0213.51	Upper	\$68,008	\$79,200	2.96	176.63	\$120,129	\$139,891	\$103,536
47	157	0213.52	Upper	\$68,008	\$79,200	0.39	209.35	\$142,375	\$165,805	\$120,858
47	157	0213.54	Middle	\$68,008	\$79,200	8.45	116.80	\$79,435	\$92,506	\$63,504
47	157	0213.55	Upper	\$68,008	\$79,200	3.57	199.15	\$135,444	\$157,727	\$123,315
47	157	0213.56	Upper	\$68,008	\$79,200	0.82	260.63	\$177,250	\$206,419	\$175,200
47	157	0213.57	Upper	\$68,008	\$79,200	0.50	286.86	\$195,089	\$227,193	\$190,938
47	157	0214.10	Upper	\$68,008	\$79,200	2.28	166.01	\$112,902	\$131,480	\$103,929
47	157	0214.20	Upper	\$68,008	\$79,200	5.85	193.71	\$131,739	\$153,418	\$101,114
47	157	0214.30	Upper	\$68,008	\$79,200	3.06	163.32	\$111,076	\$129,349	\$110,104
47	157	0215.30	Upper	\$68,008	\$79,200	0.60	201.16	\$136,810	\$159,319	\$131,600
47	157	0215.41	Upper	\$68,008	\$79,200	0.97	232.81	\$158,333	\$184,386	\$154,120
47	157	0215.42	Upper	\$68,008	\$79,200	2.24	319.35	\$217,188	\$252,925	\$166,064
47	157	0215.43	Upper	\$68,008	\$79,200	2.75	187.10	\$127,244	\$148,183	\$122,222
47	157	0215.44	Upper	\$68,008	\$79,200	1.75	135.59	\$92,218	\$107,387	\$101,289
47	157	0215.45	Upper	\$68,008	\$79,200	3.47	178.88	\$121,654	\$141,673	\$108,670
47	157	0215.46	Upper	\$68,008	\$79,200	0.30	136.30	\$92,701	\$107,950	\$115,431
47	157	0215.47	Middle	\$68,008	\$79,200	9.93	112.28	\$76,364	\$88,926	\$65,978
47	157	0215.48	Upper	\$68,008	\$79,200	2.89	120.16	\$81,724	\$95,167	\$80,652
47	157	0216.11	Upper	\$68,008	\$79,200	3.61	173.12	\$117,742	\$137,111	\$108,693
47	157	0216.12	Upper	\$68,008	\$79,200	0.35	163.51	\$111,204	\$129,500	\$106,156
47	157	0216.13	Upper	\$68,008	\$79,200	4.35	158.86	\$108,038	\$125,817	\$104,517
47	157	0216.20	Middle	\$68,008	\$79,200	15.88	103.22	\$70,202	\$81,750	\$60,372
47	157	0217.10	Low	\$68,008	\$79,200	45.02	39.38	\$26,786	\$31,189	\$23,476
47	157	0217.21	Moderate	\$68,008	\$79,200	19.86	57.06	\$38,812	\$45,192	\$32,328
47	157	0217.24	Moderate	\$68,008	\$79,200	12.83	71.27	\$48,474	\$56,446	\$46,173
47	157	0217.25	Low	\$68,008	\$79,200	17.09	45.19	\$30,737	\$35,790	\$34,616
47	157	0217.31	Moderate	\$68,008	\$79,200	37.07	61.63	\$41,914	\$48,811	\$41,474
47	157	0217.44	Middle	\$68,008	\$79,200	6.12	96.43	\$65,584	\$76,373	\$63,758
47	157	0217.45	Upper	\$68,008	\$79,200	3.84	126.73	\$86,189	\$100,370	\$82,813
47	157	0217.46	Moderate	\$68,008	\$79,200	8.15	78.51	\$53,397	\$62,180	\$50,008
47	157	0217.47	Moderate	\$68,008	\$79,200	16.86	73.21	\$49,795	\$57,982	\$48,495
47	157	0217.51	Upper	\$68,008	\$79,200	8.11	126.70	\$86,167	\$100,346	\$76,786
47	157	0217.52	Middle	\$68,008	\$79,200	20.19	86.81	\$59,038	\$68,754	\$52,517
47	157	0217.53	Middle	\$68,008	\$79,200	8.54	101.47	\$69,009	\$80,364	\$64,107
47	157	0217.54	Moderate	\$68,008	\$79,200	20.96	78.86	\$53,636	\$62,457	\$47,321
47	157	0217.55	Moderate	\$68,008	\$79,200	31.57	63.07	\$42,895	\$49,951	\$29,302
47	157	0217.56	Middle	\$68,008	\$79,200	21.03	106.55	\$72,467	\$84,388	\$35,272
47	157	0217.57	Low	\$68,008	\$79,200	33.46	47.93	\$32,603	\$37,961	\$32,839
47	157	0217.58	Moderate	\$68,008	\$79,200	15.50	51.64	\$35,123	\$40,899	\$30,929

State Code	County Code	Tract Code	Tract Income Level	2020 MSA/MD Statewide non-MSA/MD Median Family Income	2023 FFIEC Est. MSA/MD non-MSA/MD Median Family Income	% Below Poverty Line	Tract Median Family Income %	2020 Tract Median Family Income	2023 Est. Tract Median Family Income	2020 Tract Median Household Income
47	157	0217.59	Middle	\$68,008	\$79,200	10.48	83.54	\$56,818	\$66,164	\$50,655
47	157	0217.60	Moderate	\$68,008	\$79,200	11.46	78.66	\$53,500	\$62,299	\$42,246
47	157	0219.00	Middle	\$68,008	\$79,200	18.87	82.34	\$56,000	\$65,213	\$50,594
47	157	0220.23	Moderate	\$68,008	\$79,200	14.54	79.29	\$53,929	\$62,798	\$46,458
47	157	0220.24	Moderate	\$68,008	\$79,200	24.29	51.46	\$35,000	\$40,756	\$38,625
47	157	0220.25	Low	\$68,008	\$79,200	59.99	28.15	\$19,148	\$22,295	\$28,480
47	157	0220.26	Low	\$68,008	\$79,200	44.61	33.55	\$22,821	\$26,572	\$30,625
47	157	0221.11	Middle	\$68,008	\$79,200	22.57	80.34	\$54,643	\$63,629	\$31,156
47	157	0221.21	Middle	\$68,008	\$79,200	12.71	98.14	\$66,745	\$77,727	\$53,981
47	157	0221.22	Middle	\$68,008	\$79,200	22.02	83.03	\$56,473	\$65,760	\$44,338
47	157	0221.30	Moderate	\$68,008	\$79,200	23.69	73.79	\$50,184	\$58,442	\$47,306
47	157	0221.31	Moderate	\$68,008	\$79,200	41.72	55.66	\$37,860	\$44,083	\$35,726
47	157	0221.32	Moderate	\$68,008	\$79,200	25.80	78.54	\$53,415	\$62,204	\$34,167
47	157	0222.10	Moderate	\$68,008	\$79,200	19.12	62.08	\$42,222	\$49,167	\$38,333
47	157	0222.20	Moderate	\$68,008	\$79,200	41.30	51.98	\$35,352	\$41,168	\$27,864
47	157	0223.10	Low	\$68,008	\$79,200	45.38	39.99	\$27,197	\$31,672	\$24,130
47	157	0223.21	Moderate	\$68,008	\$79,200	25.96	55.75	\$37,917	\$44,154	\$32,724
47	157	0223.22	Moderate	\$68,008	\$79,200	15.86	76.58	\$52,083	\$60,651	\$45,657
47	157	0223.30	Moderate	\$68,008	\$79,200	26.83	60.27	\$40,993	\$47,734	\$37,270
47	157	0224.10	Middle	\$68,008	\$79,200	16.45	89.37	\$60,781	\$70,781	\$46,653
47	157	0225.00	Moderate	\$68,008	\$79,200	21.35	66.55	\$45,266	\$52,708	\$41,124
47	157	0226.00	Moderate	\$68,008	\$79,200	26.91	69.56	\$47,313	\$55,092	\$37,760
47	157	0227.00	Moderate	\$68,008	\$79,200	22.93	51.44	\$34,984	\$40,740	\$28,962
47	157	9801.00	Unknown	\$68,008	\$79,200	0.00	0.00	\$0	\$0	\$0
47	157	9802.00	Unknown	\$68,008	\$79,200	0.00	0.00	\$0	\$0	\$0
47	157	9803.00	Unknown	\$68,008	\$79,200	0.00	0.00	\$0	\$0	\$0
47	157	9804.01	Unknown	\$68,008	\$79,200	0.00	0.00	\$0	\$0	\$0
47	157	9804.02	Unknown	\$68,008	\$79,200	0.00	0.00	\$0	\$0	\$0

2023 FFIEC Census Report - Summary Census Population Information

State: 47 - TENNESSEE (TN)

County: 157 - SHELBY COUNTY

Tract: All Tracts



State Code	County Code	Tract Code	Tract Population	Tract Minority %	Number of Families	Number of Households	Non-Hisp White Population	Tract Minority Population	American Indian Population	Asian/Hawaiian/Pacific Islander Population	Black Population	Hispanic Population	Other Population/Two or More Races
47	157	0001.00	5821	39.43	1078	3145	3526	2295	10	843	972	295	175
47	157	0002.00	1117	97.31	170	413	30	1087	3	10	1033	9	32
47	157	0003.00	675	98.81	128	288	8	667	1	1	643	5	17
47	157	0004.00	1350	98.96	265	557	14	1336	2	0	1290	16	28
47	157	0006.00	1695	99.12	343	728	15	1680	0	0	1596	20	64
47	157	0007.00	4654	91.06	796	1959	416	4238	5	11	3993	108	121
47	157	0008.00	1934	98.60	503	934	27	1907	10	4	1814	34	45
47	157	0009.00	2519	97.22	639	1120	70	2449	11	7	2266	93	72
47	157	0011.00	3474	81.55	630	1087	641	2833	14	23	1112	1566	118
47	157	0012.00	4101	65.91	846	1404	1398	2703	5	140	865	1551	142
47	157	0013.00	3676	88.87	484	1032	409	3267	8	45	2136	981	97
47	157	0014.00	1426	95.09	369	606	70	1356	3	15	1035	282	21
47	157	0015.00	1721	85.59	361	715	248	1473	9	25	1211	176	52
47	157	0016.00	3159	37.42	419	936	1977	1182	1	92	309	648	132
47	157	0017.00	3493	55.08	913	1901	1569	1924	9	60	1575	112	168
47	157	0019.00	1148	98.78	259	494	14	1134	4	3	1085	18	24
47	157	0020.00	1578	95.94	344	687	64	1514	0	18	1440	23	33
47	157	0021.00	1422	86.85	255	719	187	1235	4	6	1134	31	60
47	157	0024.00	2352	90.31	530	906	228	2124	1	51	1947	61	64
47	157	0025.00	3104	57.89	404	1212	1307	1797	7	151	1155	353	131
47	157	0026.00	2441	17.74	657	1203	2008	433	3	56	174	57	143
47	157	0027.00	1774	62.80	395	768	660	1114	7	106	651	279	71
47	157	0028.00	3392	87.59	676	1563	421	2971	0	35	2612	207	117
47	157	0029.00	4882	14.26	1214	2193	4186	696	6	70	291	139	190
47	157	0030.00	2798	50.61	557	1408	1382	1416	8	63	1163	86	96
47	157	0031.00	3598	30.27	622	1729	2509	1089	9	97	491	301	191
47	157	0032.00	3783	33.52	519	2098	2515	1268	12	108	787	180	181
47	157	0033.00	2146	15.14	524	1244	1821	325	5	26	124	69	101
47	157	0034.00	2065	37.63	387	1303	1288	777	6	53	511	120	87
47	157	0035.00	3081	26.91	746	1691	2252	829	6	61	524	96	142
47	157	0036.00	1586	60.40	264	985	628	958	6	148	570	144	90
47	157	0037.00	1291	76.76	196	807	300	991	2	37	883	30	39
47	157	0038.00	818	75.92	14	508	197	621	3	15	545	19	39
47	157	0039.00	1532	85.64	165	1159	220	1312	4	148	1059	48	53
47	157	0042.00	3432	40.36	477	2170	2047	1385	12	112	993	108	160
47	157	0043.00	3091	46.49	630	1860	1654	1437	3	122	1104	82	126
47	157	0045.00	831	97.71	169	437	19	812	3	0	784	3	22
47	157	0046.00	1492	87.60	138	732	185	1307	0	25	1232	23	27
47	157	0050.00	1021	98.43	163	360	16	1005	0	2	958	29	16
47	157	0053.00	3023	99.44	646	1277	17	3006	7	0	2889	20	90
47	157	0055.00	1934	98.71	316	874	25	1909	3	2	1836	20	48
47	157	0056.00	3675	99.46	862	1560	20	3655	11	0	3537	26	81

State Code	County Code	Tract Code	Tract Population	Tract Minority %	Number of Families	Number of Households	Non-Hisp White Population	Tract Minority Population	American Indian Population	Asian/Hawaiian/Pacific Islander Population	Black Population	Hispanic Population	Other Population/Two or More Races
47	157	0057.00	1921	98.91	371	865	21	1900	0	0	1849	18	33
47	157	0058.00	967	99.17	162	303	8	959	2	0	928	6	23
47	157	0059.00	1952	98.77	347	649	24	1928	1	3	1812	51	61
47	157	0060.00	1759	98.58	326	787	25	1734	0	15	1667	14	38
47	157	0062.00	1676	93.97	275	683	101	1575	13	4	1451	54	53
47	157	0063.00	2182	32.36	423	1248	1476	706	6	17	515	69	99
47	157	0064.00	1520	92.11	452	740	120	1400	8	12	1311	27	42
47	157	0065.00	2346	98.76	505	1065	29	2317	10	1	2224	33	49
47	157	0066.00	2127	46.26	405	1342	1143	984	6	27	784	49	118
47	157	0067.00	3023	98.15	712	1187	56	2967	1	1	2833	84	48
47	157	0068.00	2056	98.83	453	851	24	2032	6	7	1919	40	60
47	157	0069.00	2688	98.81	597	967	32	2656	5	1	2520	71	59
47	157	0070.00	3137	80.87	603	1270	600	2537	7	46	2223	169	92
47	157	0071.00	2393	32.64	693	1094	1612	781	2	28	616	77	58
47	157	0072.00	2966	15.64	498	1594	2502	464	0	86	172	78	128
47	157	0073.00	2996	50.83	349	1551	1473	1523	9	345	974	89	106
47	157	0074.00	3085	31.64	335	1295	2109	976	1	186	504	131	154
47	157	0075.00	1342	99.55	333	583	6	1336	0	2	1291	6	37
47	157	0078.10	2747	97.56	466	994	67	2680	2	0	2566	61	51
47	157	0078.21	4450	98.58	1084	2258	63	4387	10	12	4182	66	117
47	157	0078.22	1433	94.70	324	593	76	1357	6	3	1084	221	43
47	157	0079.00	4839	97.04	1111	2257	143	4696	0	0	4368	232	96
47	157	0080.00	4891	80.29	902	2063	964	3927	5	40	3102	616	164
47	157	0081.10	1989	98.19	403	825	36	1953	4	4	1711	203	31
47	157	0081.20	4759	98.13	1366	2189	89	4670	3	9	4317	248	93
47	157	0082.00	4287	95.12	761	1760	209	4078	3	33	2584	1360	98
47	157	0085.00	4447	9.98	1133	1849	4003	444	1	160	100	62	121
47	157	0086.00	6109	25.70	1697	2453	4539	1570	4	179	751	425	211
47	157	0087.00	5126	54.80	1155	2044	2317	2809	4	177	698	1683	247
47	157	0088.00	7232	75.10	1301	2027	1801	5431	11	67	985	4172	196
47	157	0089.00	4018	81.56	802	1260	741	3277	3	48	1063	2057	106
47	157	0091.00	2933	70.17	675	962	875	2058	7	50	250	1629	122
47	157	0092.01	3670	18.45	1042	1432	2993	677	2	165	205	134	171
47	157	0092.02	3788	24.23	1174	1672	2870	918	7	352	200	195	164
47	157	0093.00	4656	34.17	1111	1978	3065	1591	4	60	807	501	219
47	157	0094.00	3141	22.57	730	1648	2432	709	8	35	327	198	141
47	157	0095.01	2943	21.88	732	1340	2299	644	0	40	304	171	129
47	157	0095.02	3422	14.11	784	1340	2939	483	3	48	239	89	104
47	157	0096.00	4968	12.16	1554	2001	4364	604	8	188	143	130	135
47	157	0097.00	3065	81.01	587	1050	582	2483	10	52	1426	890	105
47	157	0098.00	3483	53.80	613	1006	1609	1874	6	127	441	1138	162
47	157	0099.01	2832	75.53	743	1127	693	2139	4	4	1766	242	123
47	157	0099.02	2334	86.93	425	868	305	2029	4	3	1856	73	93
47	157	0100.01	3822	96.78	919	1372	123	3699	0	6	3499	92	102
47	157	0100.02	3238	94.13	1011	1284	190	3048	9	6	2913	47	73

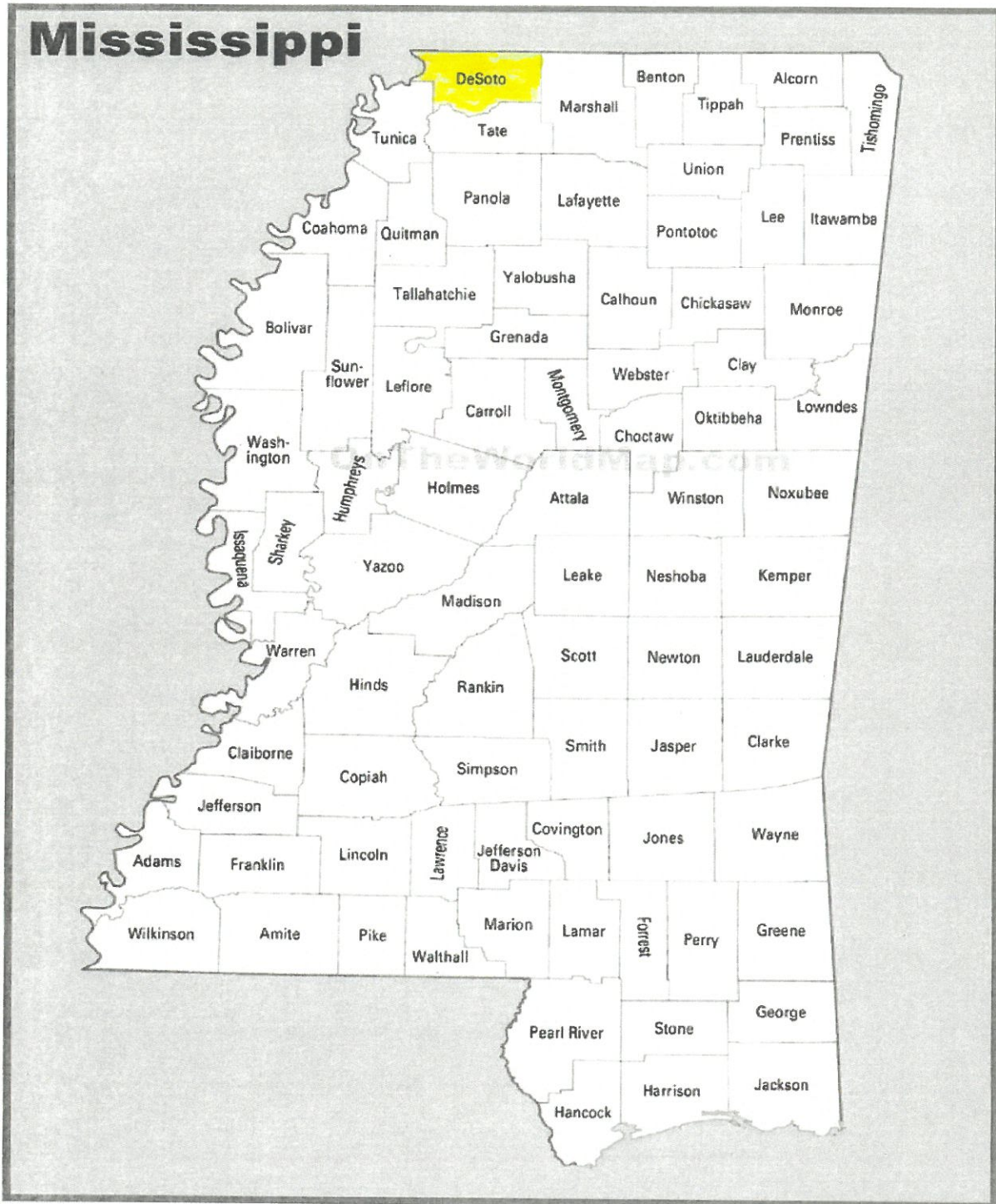
State Code	County Code	Tract Code	Tract Population	Tract Minority %	Number of Families	Number of Households	Non-Hisp White Population	Tract Minority Population	American Indian Population	Asian/Hawaiian/Pacific Islander Population	Black Population	Hispanic Population	Other Population/Two or More Races
47	157	0101.20	5311	91.72	1312	1744	440	4871	6	11	4568	183	103
47	157	0101.21	3166	93.43	596	785	208	2958	26	10	2759	82	81
47	157	0101.22	2981	94.20	514	814	173	2808	5	3	2637	57	106
47	157	0102.10	5253	95.03	1426	1928	261	4992	0	12	4699	129	152
47	157	0102.20	6618	92.38	1902	2766	504	6114	17	17	5681	202	197
47	157	0103.00	1258	97.38	305	541	33	1225	1	0	1195	4	25
47	157	0105.00	1642	91.29	337	616	143	1499	3	22	1147	289	38
47	157	0106.10	6086	95.22	1250	1962	291	5795	2	63	4431	1163	136
47	157	0106.20	3475	97.90	816	1249	73	3402	5	29	2602	700	66
47	157	0106.30	4377	97.60	820	1276	105	4272	4	16	2535	1626	91
47	157	0107.10	5105	92.67	1003	1382	374	4731	13	185	3380	1082	71
47	157	0107.20	4158	94.20	711	1489	241	3917	6	32	3246	528	105
47	157	0108.10	6149	96.32	1243	2044	226	5923	3	149	4478	1174	119
47	157	0108.20	4270	95.15	1146	1670	207	4063	6	70	3571	358	58
47	157	0110.10	3913	86.51	902	1277	528	3385	6	24	2674	621	60
47	157	0110.20	1457	95.47	394	594	66	1391	7	19	1182	152	31
47	157	0111.00	1477	98.71	315	756	19	1458	13	1	1361	48	35
47	157	0112.00	1373	99.34	181	569	9	1364	10	1	1312	17	24
47	157	0113.00	1285	84.12	193	720	204	1081	4	90	913	50	24
47	157	0114.01	1188	91.75	226	505	98	1090	4	7	1053	13	13
47	157	0114.02	3499	68.68	286	935	1096	2403	5	45	1640	637	76
47	157	0115.00	2337	98.84	439	925	27	2310	0	5	2210	36	59
47	157	0116.00	2274	98.42	449	838	36	2238	3	0	2187	14	34
47	157	0117.00	1280	98.13	161	427	24	1256	1	1	1202	8	44
47	157	0118.00	5743	73.67	1208	1948	1512	4231	10	70	1996	1939	216
47	157	0201.01	4134	70.71	821	1230	1211	2923	11	10	2509	221	172
47	157	0201.02	3095	20.94	807	1087	2447	648	8	28	370	83	159
47	157	0202.10	5867	43.80	1605	2210	3297	2570	23	132	1640	418	357
47	157	0202.21	2742	48.83	653	947	1403	1339	23	33	1006	120	157
47	157	0202.22	3168	62.06	622	839	1202	1966	14	20	1351	433	148
47	157	0203.01	1920	23.59	566	708	1467	453	1	28	240	86	98
47	157	0203.02	3507	40.92	663	1162	2072	1435	14	57	933	169	262
47	157	0204.00	976	44.16	261	320	545	431	0	33	169	155	74
47	157	0205.11	2165	89.15	550	812	235	1930	0	2	1791	71	66
47	157	0205.21	3364	95.54	867	1303	150	3214	4	9	3066	71	64
47	157	0205.23	3156	93.66	817	1107	200	2956	6	10	2659	196	85
47	157	0205.24	4795	94.06	1178	1627	285	4510	7	8	4087	272	136
47	157	0205.31	5694	88.20	1267	1657	672	5022	3	25	3661	1161	172
47	157	0205.32	6041	87.44	1487	2308	759	5282	12	42	4833	268	127
47	157	0205.41	5479	88.74	1116	1600	617	4862	6	39	4320	313	184
47	157	0205.42	5237	91.64	1305	2246	438	4799	11	30	4313	324	121
47	157	0205.43	2938	94.18	574	1488	171	2767	3	5	2584	101	74
47	157	0205.44	2295	87.89	749	1041	278	2017	8	9	1784	118	98
47	157	0206.10	4408	80.92	890	1596	841	3567	0	63	2952	375	177
47	157	0206.21	7036	69.81	2106	3072	2124	4912	27	113	4066	415	291

State Code	County Code	Tract Code	Tract Population	Tract Minority %	Number of Families	Number of Households	Non-Hisp White Population	Tract Minority Population	American Indian Population	Asian/Hawaiian/Pacific Islander Population	Black Population	Hispanic Population	Other Population/Two or More Races
47	157	0206.22	4347	29.15	1160	1681	3080	1267	9	55	777	254	172
47	157	0206.32	5689	24.93	1409	1838	4271	1418	13	262	619	291	233
47	157	0206.33	2920	16.06	719	1188	2451	469	7	53	176	122	111
47	157	0206.34	2836	19.29	855	1095	2289	547	3	75	254	95	120
47	157	0206.35	2576	18.01	767	988	2112	464	10	17	179	114	144
47	157	0206.51	6642	48.83	1674	2339	3399	3243	12	104	2356	487	284
47	157	0206.52	5230	21.99	1213	1781	4080	1150	15	101	550	221	263
47	157	0206.53	4173	48.21	1259	1411	2161	2012	3	102	1573	175	159
47	157	0206.54	5138	43.97	1676	2113	2879	2259	10	126	1716	186	221
47	157	0206.55	3160	24.68	1093	1244	2380	780	3	63	443	123	148
47	157	0206.56	5147	43.40	1411	1736	2913	2234	5	297	1472	224	236
47	157	0206.57	5033	61.79	1395	1669	1923	3110	8	174	2513	243	172
47	157	0206.58	5098	72.85	1201	1852	1384	3714	6	94	3067	376	171
47	157	0207.00	2547	18.18	656	801	2084	463	8	10	272	71	102
47	157	0208.33	5858	42.57	1567	1766	3364	2494	3	493	1492	246	260
47	157	0208.34	3057	27.35	1033	1298	2221	836	12	65	518	107	134
47	157	0208.35	2564	32.25	582	825	1737	827	0	15	624	84	104
47	157	0208.36	8194	24.69	2129	2327	6171	2023	15	565	757	269	417
47	157	0208.37	7686	31.68	1731	2503	5251	2435	18	252	975	846	344
47	157	0209.01	5762	26.33	1206	1407	4245	1517	16	160	707	320	314
47	157	0209.02	6867	24.22	1469	1688	5204	1663	19	152	853	319	320
47	157	0210.20	7444	50.23	1399	1861	3705	3739	10	260	2822	353	294
47	157	0210.21	6566	73.03	1209	1799	1771	4795	5	323	3889	369	209
47	157	0210.22	6856	73.64	1619	2190	1807	5049	7	304	4112	328	298
47	157	0210.23	5247	53.42	2068	2541	2444	2803	4	128	2183	270	218
47	157	0211.11	4120	72.18	943	1682	1146	2974	1	75	1719	1002	177
47	157	0211.12	6975	66.71	1421	2332	2322	4653	12	93	1582	2705	261
47	157	0211.13	3808	65.57	989	1583	1311	2497	3	153	1376	805	160
47	157	0211.21	4888	63.42	940	2815	1788	3100	6	126	2499	284	185
47	157	0211.22	5637	68.07	1413	2109	1800	3837	8	268	2208	1124	229
47	157	0211.24	8045	71.45	1855	2717	2297	5748	7	352	3898	1153	338
47	157	0211.25	4495	55.33	1053	1881	2008	2487	12	209	1717	354	195
47	157	0211.26	4312	63.20	1190	2037	1587	2725	14	320	1795	354	242
47	157	0211.35	6576	65.18	1505	2485	2290	4286	8	370	2809	808	291
47	157	0211.36	5284	62.02	1449	1986	2007	3277	5	271	2531	281	189
47	157	0211.38	4213	64.73	1138	1377	1486	2727	1	241	2105	218	162
47	157	0211.39	4273	45.57	1308	1522	2326	1947	11	334	1252	163	187
47	157	0211.40	4740	49.47	1621	2293	2395	2345	5	190	1581	339	230
47	157	0211.41	7638	66.92	2062	2882	2527	5111	11	386	3791	660	263
47	157	0211.42	3636	53.47	931	1578	1692	1944	3	78	1435	253	175
47	157	0211.43	4419	55.99	1464	2000	1945	2474	5	232	1698	367	172
47	157	0211.44	3768	61.60	732	1563	1447	2321	19	200	1613	297	192
47	157	0212.00	1689	70.52	0	0	498	1191	6	11	1058	110	6
47	157	0213.11	4850	19.38	1514	2116	3910	940	3	295	398	118	126
47	157	0213.12	2100	27.62	484	1087	1520	580	1	109	275	93	102

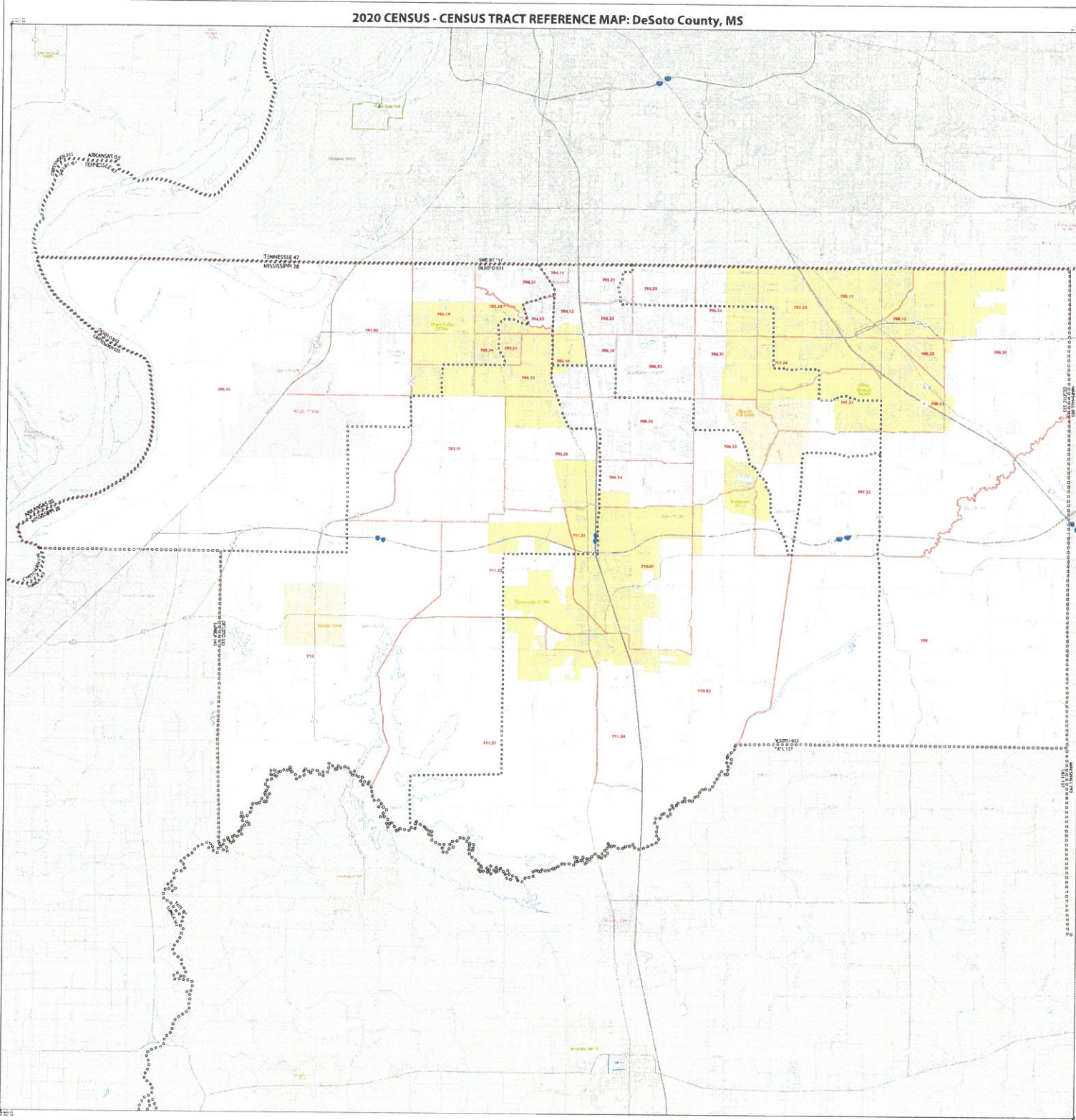
State Code	County Code	Tract Code	Tract Population	Tract Minority %	Number of Families	Number of Households	Non-Hisp White Population	Tract Minority Population	American Indian Population	Asian/Hawaiian/Pacific Islander Population	Black Population	Hispanic Population	Other Population/Two or More Races
47	157	0213.20	5989	32.36	1402	2150	4051	1938	5	86	1475	199	173
47	157	0213.31	3500	46.46	917	1374	1874	1626	8	58	1266	171	123
47	157	0213.33	3988	61.33	1179	1578	1542	2446	4	104	1916	274	148
47	157	0213.34	3682	76.89	1270	2073	851	2831	5	81	2373	252	120
47	157	0213.41	5686	14.93	1371	2114	4837	849	9	238	259	164	179
47	157	0213.51	5273	19.23	1167	1757	4259	1014	7	415	199	195	198
47	157	0213.52	6969	14.78	1753	2489	5939	1030	15	451	145	183	236
47	157	0213.54	6169	74.19	1256	2801	1592	4577	16	882	3193	292	194
47	157	0213.55	5383	34.87	1545	2019	3506	1877	27	436	1093	136	185
47	157	0213.56	4125	19.35	1089	1182	3327	798	7	382	149	111	149
47	157	0213.57	5712	20.78	1925	2017	4525	1187	7	676	133	165	206
47	157	0214.10	2983	12.81	953	1272	2601	382	3	130	67	86	96
47	157	0214.20	3373	17.55	844	1247	2781	592	5	218	140	114	115
47	157	0214.30	4103	20.16	1165	1665	3276	827	4	201	311	133	178
47	157	0215.30	5956	24.46	1694	1866	4499	1457	20	814	269	163	191
47	157	0215.41	8296	25.90	2192	2409	6147	2149	10	1105	367	290	377
47	157	0215.42	4491	23.87	1488	1902	3419	1072	6	440	184	221	221
47	157	0215.43	4589	65.68	998	1090	1575	3014	4	1029	1568	235	178
47	157	0215.44	3294	56.62	842	1314	1429	1865	2	1267	353	148	95
47	157	0215.45	3524	40.72	813	1298	2089	1435	7	538	635	147	108
47	157	0215.46	3770	65.15	865	1696	1314	2456	7	912	1240	175	122
47	157	0215.47	6507	90.98	1350	2172	587	5920	6	297	5126	347	144
47	157	0215.48	3058	70.18	834	1236	912	2146	8	342	1563	127	106
47	157	0216.11	6080	17.11	1798	2005	5040	1040	8	208	322	236	266
47	157	0216.12	4485	10.32	1474	1689	4022	463	5	78	91	116	173
47	157	0216.13	4537	19.11	1360	1599	3670	867	4	269	193	208	193
47	157	0216.20	3067	60.19	768	1148	1221	1846	0	128	1318	312	88
47	157	0217.10	2772	95.49	468	1266	125	2647	2	10	2493	97	45
47	157	0217.21	4860	95.62	907	1874	213	4647	4	40	4111	393	99
47	157	0217.24	2283	95.18	519	960	110	2173	0	14	1780	321	58
47	157	0217.25	3798	96.29	834	2245	141	3657	3	18	3273	301	62
47	157	0217.31	2855	98.11	705	911	54	2801	3	8	1844	916	30
47	157	0217.44	5802	92.64	1676	2173	427	5375	0	73	4581	589	132
47	157	0217.45	8226	92.86	2102	2730	587	7639	13	100	6640	709	177
47	157	0217.46	4653	94.95	1057	1737	235	4418	2	28	3854	451	83
47	157	0217.47	3985	96.19	959	1291	152	3833	7	45	3180	528	73
47	157	0217.51	7520	95.00	1604	2028	376	7144	5	135	6295	568	141
47	157	0217.52	5080	96.54	1266	1923	176	4904	10	66	4483	226	119
47	157	0217.53	3208	94.01	658	1045	192	3016	6	38	2526	397	49
47	157	0217.54	4343	95.26	1190	1655	206	4137	10	56	3573	425	73
47	157	0217.55	1763	94.33	266	908	100	1663	0	1	1539	74	49
47	157	0217.56	2144	68.80	394	1053	669	1475	2	1	1266	166	40
47	157	0217.57	3743	97.57	644	1423	91	3652	5	13	3199	368	67
47	157	0217.58	3030	95.48	736	1470	137	2893	15	20	2496	299	63
47	157	0217.59	4194	96.45	768	1391	149	4045	0	19	3163	797	66

State Code	County Code	Tract Code	Tract Population	Tract Minority %	Number of Families	Number of Households	Non-Hisp White Population	Tract Minority Population	American Indian Population	Asian/Hawaiian/Pacific Islander Population	Black Population	Hispanic Population	Other Population/Two or More Races
47	157	0217.60	3950	96.35	972	1430	144	3806	6	19	2975	730	76
47	157	0219.00	4929	98.21	1334	1895	88	4841	1	9	4534	207	90
47	157	0220.23	1703	99.06	288	581	16	1687	0	1	1640	15	31
47	157	0220.24	3246	97.38	776	1171	85	3161	3	0	3083	30	45
47	157	0220.25	3097	97.35	621	1191	82	3015	3	3	2849	56	104
47	157	0220.26	2304	96.66	378	609	77	2227	3	16	2137	28	43
47	157	0221.11	5307	97.98	1026	2416	107	5200	19	8	4843	214	116
47	157	0221.21	4267	96.65	1088	1640	143	4124	1	4	4001	46	72
47	157	0221.22	3934	97.99	1145	1640	79	3855	4	7	3733	26	85
47	157	0221.30	4944	97.07	1285	2040	145	4799	12	8	4640	58	81
47	157	0221.31	2892	98.58	845	1190	41	2851	6	1	2743	30	71
47	157	0221.32	2974	97.44	808	1316	76	2898	6	3	2795	34	60
47	157	0222.10	4280	98.57	1030	1606	61	4219	3	8	4049	73	86
47	157	0222.20	3418	98.27	767	1494	59	3359	6	4	3229	32	88
47	157	0223.10	5479	99.42	1399	1909	32	5447	9	1	5277	51	109
47	157	0223.21	4034	98.93	827	1333	43	3991	7	4	3889	28	63
47	157	0223.22	3972	98.97	920	1445	41	3931	3	1	3825	48	54
47	157	0223.30	4607	99.37	1291	1719	29	4578	22	3	4216	237	100
47	157	0224.10	5592	96.19	1587	2236	213	5379	9	8	5086	154	122
47	157	0225.00	4550	94.86	1321	1710	234	4316	7	28	3568	650	63
47	157	0226.00	4508	95.21	849	1312	216	4292	2	17	3080	1123	70
47	157	0227.00	6387	98.70	1720	2875	83	6304	2	5	6122	50	125
47	157	9801.00	15	86.67	0	0	2	13	0	5	6	1	1
47	157	9802.00	11	90.91	0	0	1	10	0	0	4	3	3
47	157	9803.00	0	0.00	0	0	0	0	0	0	0	0	0
47	157	9804.01	1829	81.68	0	0	335	1494	0	2	1465	26	1
47	157	9804.02	9	22.22	0	0	7	2	0	0	0	0	2

MISSISSIPPI COUNTY MAP



2020 CENSUS - CENSUS TRACT REFERENCE MAP: DeSoto County, MS



SYMBOL	SYMBOL	SYMBOL	SYMBOL	SYMBOL	SYMBOL	SYMBOL
.....
.....
.....
.....
.....
.....
.....
.....
.....
.....
.....
.....
.....
.....
.....
.....
.....
.....

LEGEND

Water
 Water (shaded) [Symbol] Water
 Water (unshaded) [Symbol] Water
 Wetlands (shaded) [Symbol] Wetlands
 Wetlands (unshaded) [Symbol] Wetlands
 Flooded Area (shaded) [Symbol] Flooded Area
 Flooded Area (unshaded) [Symbol] Flooded Area

Boundaries
 County Boundary [Symbol] County Boundary
 Census Tract Boundary [Symbol] Census Tract Boundary
 Precinct Boundary [Symbol] Precinct Boundary
 School District Boundary [Symbol] School District Boundary
 Interstate Boundary [Symbol] Interstate Boundary
 Municipal Boundary [Symbol] Municipal Boundary

Infrastructure
 Interstate [Symbol] Interstate
 Major Road [Symbol] Major Road
 Road [Symbol] Road
 Railway [Symbol] Railway
 Canal [Symbol] Canal
 Pipeline [Symbol] Pipeline
 Utility Line [Symbol] Utility Line
 Water Tower [Symbol] Water Tower
 Power Line [Symbol] Power Line
 Telephone Line [Symbol] Telephone Line
 Cell Tower [Symbol] Cell Tower

Other
 Building [Symbol] Building
 Tower [Symbol] Tower
 Antenna [Symbol] Antenna
 Wind Turbine [Symbol] Wind Turbine
 Transmission Tower [Symbol] Transmission Tower
 Tower (shaded) [Symbol] Tower (shaded)
 Tower (unshaded) [Symbol] Tower (unshaded)
 Antenna (shaded) [Symbol] Antenna (shaded)
 Antenna (unshaded) [Symbol] Antenna (unshaded)
 Wind Turbine (shaded) [Symbol] Wind Turbine (shaded)
 Wind Turbine (unshaded) [Symbol] Wind Turbine (unshaded)
 Transmission Tower (shaded) [Symbol] Transmission Tower (shaded)
 Transmission Tower (unshaded) [Symbol] Transmission Tower (unshaded)

Map Scale: 1 inch = 1 mile

North Arrow

Sheet 1 of 1 PARENT sheet
Total Sheets: 1 (Index Q, Parent I, Inset G)

NAME: DeSoto County (833)
 1 of 171 sheets, or within 80 sheets of end of
 83 3rd Census DC

All legal boundaries and names are as of December 1, 2019. The boundaries shown on this map are for informational purposes only. No warranty is made for any use of this map other than for general reference. All information is provided as is, without any guarantee of accuracy or completeness. © 2020 US Census Bureau. All rights reserved. US Census Bureau. 2020 Census. All rights reserved.

US Census Bureau
 American Factfinder
 Census of Population and Housing
 Census of Population and Housing
 Census of Population and Housing
 Census of Population and Housing
 Census of Population and Housing
 Census of Population and Housing
 Census of Population and Housing
 Census of Population and Housing
 Census of Population and Housing
 Census of Population and Housing



2023 FFIEC Census Report - Summary Census Demographic Information

State: 28 - MISSISSIPPI (MS)

County: 033 - DESOTO COUNTY

Tract: All Tracts



State Code	County Code	Tract Code	Tract Income Level	Distressed or Underserved Tract	Tract Median Family Income %	2023 FFIEC Est. MSA/MD non-MSA/MD Median Family Income	2023 Est. Tract Median Family Income	2020 Tract Median Family Income	Tract Population	Tract Minority %	Minority Population	Owner Occupied Units	1-to-4-Family Units
28	033	0701.01	Moderate	No	65.57	\$79,200	\$51,931	\$44,598	2933	55.06	1615	610	1093
28	033	0701.02	Middle	No	99.75	\$79,200	\$79,002	\$67,844	4513	43.19	1949	1337	1592
28	033	0702.10	Upper	No	121.74	\$79,200	\$96,418	\$82,797	6784	65.99	4477	2243	2624
28	033	0702.21	Middle	No	107.85	\$79,200	\$85,417	\$73,347	4289	42.29	1814	942	1378
28	033	0702.22	Middle	No	99.51	\$79,200	\$78,812	\$67,679	4639	47.55	2206	596	909
28	033	0703.10	Moderate	No	67.05	\$79,200	\$53,104	\$45,604	3656	53.80	1967	716	1278
28	033	0703.22	Middle	No	86.31	\$79,200	\$68,358	\$58,698	3669	56.96	2090	921	1444
28	033	0703.23	Moderate	No	62.77	\$79,200	\$49,714	\$42,692	5687	76.74	4364	992	1454
28	033	0703.24	Moderate	No	61.29	\$79,200	\$48,542	\$41,683	4677	61.51	2877	841	1450
28	033	0703.25	Moderate	No	78.32	\$79,200	\$62,029	\$53,265	2884	56.41	1627	377	1299
28	033	0704.11	Moderate	No	78.00	\$79,200	\$61,776	\$53,048	1590	33.77	537	440	681
28	033	0704.12	Moderate	No	75.95	\$79,200	\$60,152	\$51,656	4064	61.74	2509	808	1312
28	033	0704.21	Middle	No	106.67	\$79,200	\$84,483	\$72,550	3203	48.89	1566	706	1228
28	033	0704.22	Moderate	No	73.79	\$79,200	\$58,442	\$50,185	2443	39.50	965	607	881
28	033	0705.21	Moderate	No	76.05	\$79,200	\$60,232	\$51,726	3477	45.24	1573	657	1275
28	033	0705.22	Middle	No	97.13	\$79,200	\$76,927	\$66,059	4120	37.18	1532	1203	1830
28	033	0705.23	Middle	No	90.35	\$79,200	\$71,557	\$61,451	7391	58.48	4322	2266	2845
28	033	0705.24	Upper	No	142.02	\$79,200	\$112,480	\$96,587	3792	36.52	1385	1109	1159
28	033	0706.10	Middle	No	85.11	\$79,200	\$67,407	\$57,885	2715	57.13	1551	463	845
28	033	0706.31	Upper	No	177.99	\$79,200	\$140,968	\$121,048	4365	36.98	1614	1645	1879
28	033	0706.32	Upper	No	124.03	\$79,200	\$98,232	\$84,355	4368	37.84	1653	1480	1639
28	033	0706.33	Upper	No	158.77	\$79,200	\$125,746	\$107,977	5186	18.97	984	1336	1497
28	033	0706.34	Upper	No	151.68	\$79,200	\$120,131	\$103,159	1733	36.47	632	416	517
28	033	0706.35	Upper	No	205.87	\$79,200	\$163,049	\$140,010	7750	39.55	3065	2231	2267
28	033	0707.21	Upper	No	156.50	\$79,200	\$123,948	\$106,435	6249	46.22	2888	1821	2052
28	033	0707.22	Upper	No	192.78	\$79,200	\$152,682	\$131,111	6728	21.89	1473	1512	1799

* Will automatically be included in the 2024 Distressed or Underserved Tract List

State Code	County Code	Tract Code	Tract Income Level	Distressed or Underserved Tract	Tract Median Family Income %	2023 FFI/EC Est. MSA/MD non-MSA/MD Median Family Income	2023 Est. Tract Median Family Income	2020 Tract Median Family Income	Tract Population	Tract Minority %	Minority Population	Owner Occupied Units	1- to 4- Family Units
28	033	0707.23	Upper	No	132.41	\$79,200	\$104,869	\$90,056	5205	53.78	2799	1312	1620
28	033	0707.24	Upper	No	141.73	\$79,200	\$112,250	\$96,392	2914	40.22	1172	895	979
28	033	0708.11	Upper	No	131.56	\$79,200	\$104,196	\$89,475	6436	51.79	3333	1721	2186
28	033	0708.12	Middle	No	110.12	\$79,200	\$87,215	\$74,893	5333	52.05	2776	864	1307
28	033	0708.21	Middle	No	112.66	\$79,200	\$89,227	\$76,623	5115	30.58	1564	1567	2058
28	033	0708.22	Middle	No	101.17	\$79,200	\$80,127	\$68,806	4852	43.12	2092	1333	1798
28	033	0708.30	Upper	No	167.54	\$79,200	\$132,692	\$113,941	7336	41.79	3066	2201	2377
28	033	0709.00	Upper	No	148.83	\$79,200	\$117,873	\$101,218	5967	19.22	1147	1519	1876
28	033	0710.01	Upper	No	124.64	\$79,200	\$98,715	\$84,766	6040	14.57	880	2142	2326
28	033	0710.02	Upper	No	151.56	\$79,200	\$120,036	\$103,077	4936	14.87	734	1522	1703
28	033	0711.21	Middle	No	109.44	\$79,200	\$86,676	\$74,433	4459	23.46	1046	1389	1591
28	033	0711.22	Upper	No	121.07	\$79,200	\$95,887	\$82,344	2661	13.30	354	706	867
28	033	0711.23	Upper	No	131.07	\$79,200	\$103,807	\$89,143	4115	14.51	597	1220	1283
28	033	0711.24	Moderate	No	58.65	\$79,200	\$46,451	\$39,889	3850	39.06	1504	705	1255
28	033	0712.00	Middle	No	97.12	\$79,200	\$76,919	\$66,050	3190	17.21	549	797	1309

* Will automatically be included in the 2024 Distressed or Underserved Tract List

2023 FFIEC Census Report - Summary Census Housing Information

State: 28 - MISSISSIPPI (MS)

County: 033 - DESOTO COUNTY

Tract: All Tracts



State Code	County Code	Tract Code	Total Housing Units	1- to 4-Family Units	Median House Age (Years)	Inside Principal City?	Owner Occupied Units	Vacant Units	Owner Occupied 1- to 4-Family Units	Renter Occupied Units
28	033	0701.01	1477	1093	23	No	610	216	610	651
28	033	0701.02	1592	1592	29	No	1337	48	1337	207
28	033	0702.10	2844	2624	18	No	2243	62	2243	539
28	033	0702.21	1378	1378	42	No	942	77	942	359
28	033	0702.22	1681	909	21	No	596	192	596	893
28	033	0703.10	1805	1278	24	No	716	83	716	1006
28	033	0703.22	1501	1444	30	No	921	77	921	503
28	033	0703.23	1907	1454	23	No	992	133	992	782
28	033	0703.24	1564	1450	36	No	841	196	841	527
28	033	0703.25	1302	1299	41	No	377	118	377	807
28	033	0704.11	709	681	51	No	440	39	440	230
28	033	0704.12	1781	1312	33	No	808	210	808	763
28	033	0704.21	1228	1228	51	No	706	117	706	405
28	033	0704.22	996	881	49	No	607	60	600	329
28	033	0705.21	1307	1275	42	No	657	137	657	513
28	033	0705.22	2177	1830	32	No	1203	146	1203	828
28	033	0705.23	2845	2845	18	No	2266	45	2266	534
28	033	0705.24	1178	1159	24	No	1109	0	1109	69
28	033	0706.10	1252	845	28	No	463	84	463	705
28	033	0706.31	1879	1879	19	No	1645	47	1645	187
28	033	0706.32	1639	1639	19	No	1480	126	1480	33
28	033	0706.33	1497	1497	19	No	1336	96	1336	65
28	033	0706.34	517	517	28	No	416	0	416	101
28	033	0706.35	2361	2267	15	No	2231	94	2231	36
28	033	0707.21	2052	2052	22	No	1821	49	1821	182
28	033	0707.22	1799	1799	16	No	1512	28	1512	259
28	033	0707.23	1620	1620	20	No	1312	48	1312	260
28	033	0707.24	1016	979	19	No	895	52	895	69
28	033	0708.11	2503	2186	24	No	1721	86	1721	696
28	033	0708.12	2125	1307	19	No	864	167	864	1094
28	033	0708.21	2067	2058	27	No	1567	148	1567	352
28	033	0708.22	1798	1798	26	No	1333	95	1333	370
28	033	0708.30	2377	2377	16	No	2201	0	2201	176
28	033	0709.00	1889	1876	27	No	1519	210	1519	160
28	033	0710.01	2609	2326	21	No	2142	70	2142	397
28	033	0710.02	1703	1703	24	No	1522	69	1522	112
28	033	0711.21	1634	1591	21	No	1389	44	1389	201
28	033	0711.22	867	867	26	No	706	18	706	143
28	033	0711.23	1283	1283	24	No	1220	0	1220	63
28	033	0711.24	1343	1255	38	No	705	180	705	458
28	033	0712.00	1309	1309	34	No	797	320	797	192

2023 FFIEC Census Report - Summary Census Income Information
State: 28 - MISSISSIPPI (MS)
County: 033 - DESOTO COUNTY



State Code	County Code	Tract Code	Tract Income Level	2020 MSA/MD Statewide non-MSA/MD Median Family Income	2023 FFIEC Est. MSA/MD non-MSA/MD Median Family Income	% Below Poverty Line	Tract Median Family Income %	2020 Tract Median Family Income	2023 Est. Tract Median Family Income	2020 Tract Median Household Income
28	033	0701.01	Moderate	\$68,008	\$79,200	16.56	65.57	\$44,598	\$51,931	\$34,063
28	033	0701.02	Middle	\$68,008	\$79,200	8.59	99.75	\$67,844	\$79,002	\$72,885
28	033	0702.10	Upper	\$68,008	\$79,200	6.30	121.74	\$82,797	\$96,418	\$72,011
28	033	0702.21	Middle	\$68,008	\$79,200	16.73	107.85	\$73,347	\$85,417	\$64,219
28	033	0702.22	Middle	\$68,008	\$79,200	7.05	99.51	\$67,679	\$78,812	\$66,058
28	033	0703.10	Moderate	\$68,008	\$79,200	15.24	67.05	\$45,604	\$53,104	\$46,578
28	033	0703.22	Middle	\$68,008	\$79,200	9.73	86.31	\$58,698	\$68,358	\$57,639
28	033	0703.23	Moderate	\$68,008	\$79,200	20.57	62.77	\$42,692	\$49,714	\$51,034
28	033	0703.24	Moderate	\$68,008	\$79,200	30.30	61.29	\$41,683	\$48,542	\$41,545
28	033	0703.25	Moderate	\$68,008	\$79,200	12.02	78.32	\$53,265	\$62,029	\$51,513
28	033	0704.11	Moderate	\$68,008	\$79,200	13.99	78.00	\$53,048	\$61,776	\$52,868
28	033	0704.12	Moderate	\$68,008	\$79,200	26.57	75.95	\$51,656	\$60,152	\$45,404
28	033	0704.21	Middle	\$68,008	\$79,200	20.29	106.67	\$72,550	\$84,483	\$44,675
28	033	0704.22	Moderate	\$68,008	\$79,200	27.12	73.79	\$50,185	\$58,442	\$41,813
28	033	0705.21	Moderate	\$68,008	\$79,200	12.17	76.05	\$51,726	\$60,232	\$43,026
28	033	0705.22	Middle	\$68,008	\$79,200	13.43	97.13	\$66,059	\$76,927	\$65,147
28	033	0705.23	Middle	\$68,008	\$79,200	14.99	90.35	\$61,451	\$71,557	\$61,173
28	033	0705.24	Upper	\$68,008	\$79,200	1.83	142.02	\$96,587	\$112,480	\$83,571
28	033	0706.10	Middle	\$68,008	\$79,200	8.29	85.11	\$57,885	\$67,407	\$51,923
28	033	0706.31	Upper	\$68,008	\$79,200	2.14	177.99	\$121,048	\$140,968	\$120,341
28	033	0706.32	Upper	\$68,008	\$79,200	8.21	124.03	\$84,355	\$98,232	\$81,973
28	033	0706.33	Upper	\$68,008	\$79,200	1.36	158.77	\$107,977	\$125,746	\$98,583
28	033	0706.34	Upper	\$68,008	\$79,200	0.00	151.68	\$103,159	\$120,131	\$102,686
28	033	0706.35	Upper	\$68,008	\$79,200	2.05	205.87	\$140,010	\$163,049	\$127,194
28	033	0707.21	Upper	\$68,008	\$79,200	7.27	156.50	\$106,435	\$123,948	\$98,552
28	033	0707.22	Upper	\$68,008	\$79,200	5.41	192.78	\$131,111	\$152,682	\$126,157
28	033	0707.23	Upper	\$68,008	\$79,200	7.51	132.41	\$90,056	\$104,869	\$90,722
28	033	0707.24	Upper	\$68,008	\$79,200	8.46	141.73	\$96,392	\$112,250	\$65,000
28	033	0708.11	Upper	\$68,008	\$79,200	9.43	131.56	\$89,475	\$104,196	\$77,564
28	033	0708.12	Middle	\$68,008	\$79,200	6.62	110.12	\$74,893	\$87,215	\$64,601
28	033	0708.21	Middle	\$68,008	\$79,200	8.58	112.66	\$76,623	\$89,227	\$77,440
28	033	0708.22	Middle	\$68,008	\$79,200	12.72	101.17	\$68,806	\$80,127	\$62,669
28	033	0708.30	Upper	\$68,008	\$79,200	2.37	167.54	\$113,941	\$132,692	\$107,708
28	033	0709.00	Upper	\$68,008	\$79,200	1.61	148.83	\$101,218	\$117,873	\$88,029
28	033	0710.01	Upper	\$68,008	\$79,200	10.07	124.64	\$84,766	\$98,715	\$70,694
28	033	0710.02	Upper	\$68,008	\$79,200	4.22	151.56	\$103,077	\$120,036	\$96,979
28	033	0711.21	Middle	\$68,008	\$79,200	2.52	109.44	\$74,433	\$86,676	\$72,083
28	033	0711.22	Upper	\$68,008	\$79,200	12.84	121.07	\$82,344	\$95,887	\$82,036
28	033	0711.23	Upper	\$68,008	\$79,200	3.04	131.07	\$89,143	\$103,807	\$87,856
28	033	0711.24	Moderate	\$68,008	\$79,200	8.34	58.65	\$39,889	\$46,451	\$39,014
28	033	0712.00	Middle	\$68,008	\$79,200	7.22	97.12	\$66,050	\$76,919	\$59,797

2023 FFIEC Census Report - Summary Census Population Information

State: 28 - MISSISSIPPI (MS)

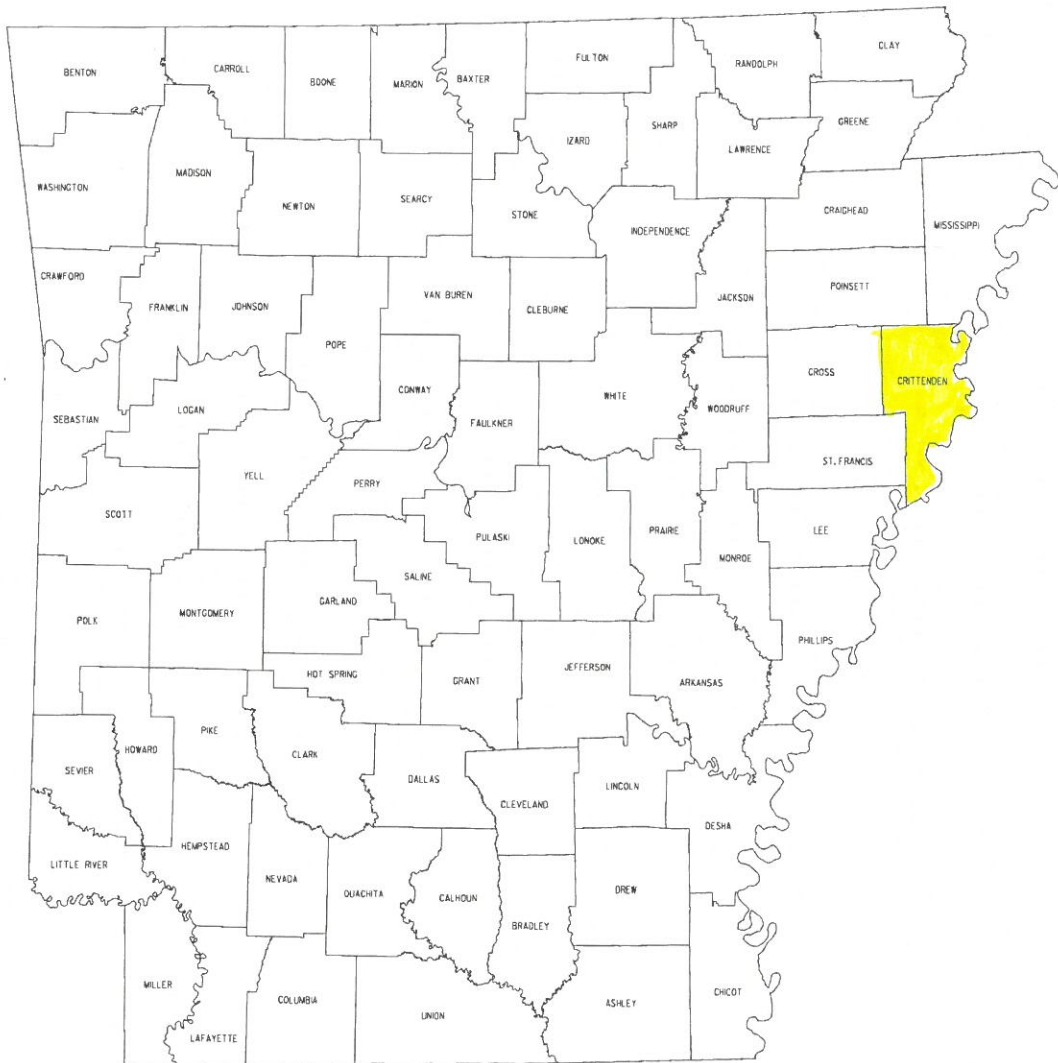
County: 033 - DESOTO COUNTY

Tract: All Tracts

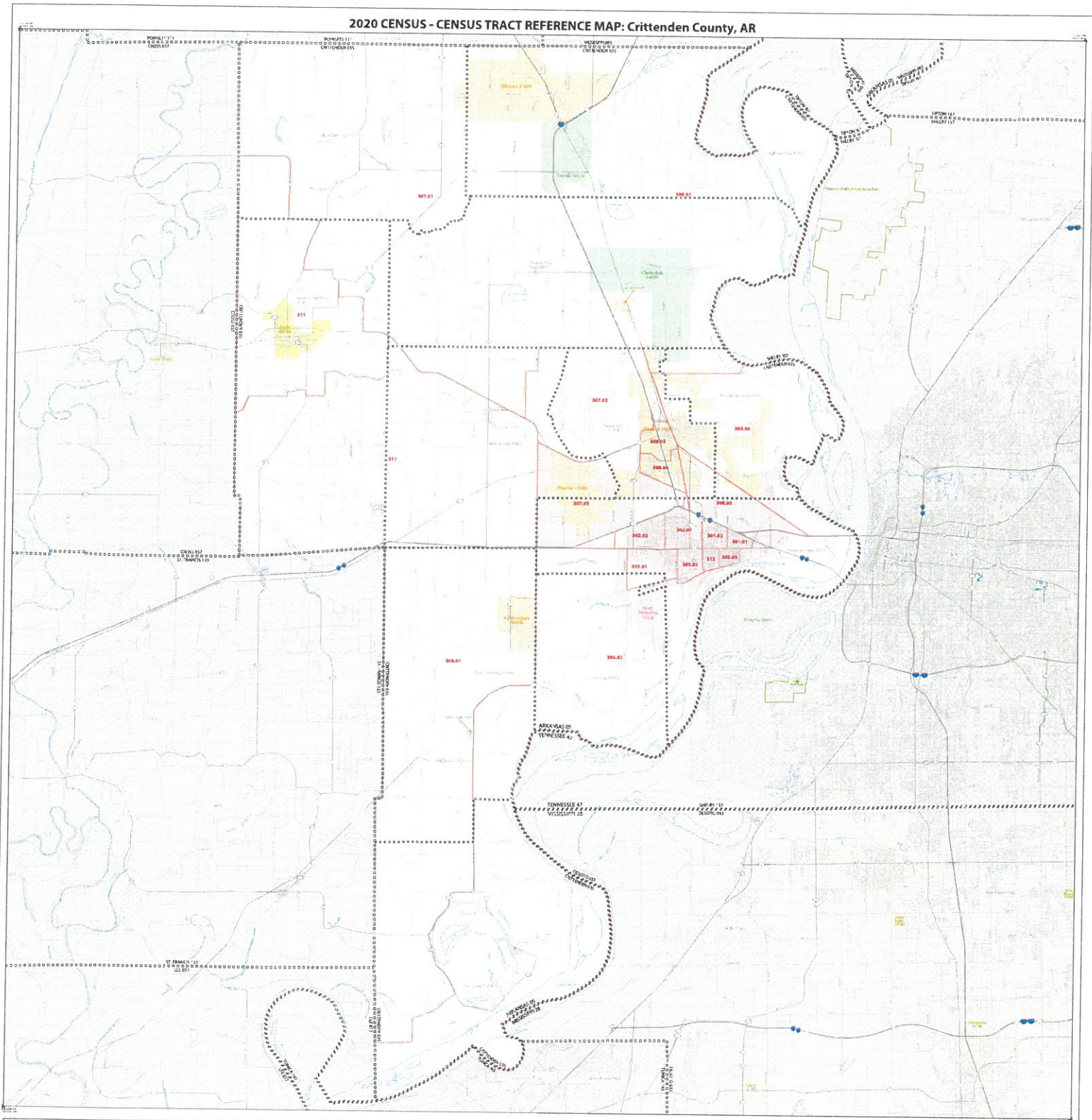


State Code	County Code	Tract Code	Tract Population	Tract Minority %	Number of Families	Number of Households	Non-Hisp White Population	Tract Minority Population	American Indian Population	Asian/Hawaiian/Pacific Islander Population	Black Population	Hispanic Population	Other Population/Two or More Races
28	033	0701.01	2933	55.06	848	1261	1318	1615	0	39	1215	291	70
28	033	0701.02	4513	43.19	1213	1544	2564	1949	13	52	1404	281	199
28	033	0702.10	6784	65.99	2114	2782	2307	4477	9	64	3635	517	252
28	033	0702.21	4289	42.29	1009	1301	2475	1814	6	28	1299	242	239
28	033	0702.22	4639	47.55	999	1489	2433	2206	9	82	1635	240	240
28	033	0703.10	3656	53.80	989	1722	1689	1967	8	25	1306	492	136
28	033	0703.22	3669	56.96	1062	1424	1579	2090	4	44	1678	206	158
28	033	0703.23	5687	76.74	1350	1774	1323	4364	4	67	3774	337	182
28	033	0703.24	4677	61.51	1012	1368	1800	2877	7	14	2229	399	228
28	033	0703.25	2884	56.41	931	1184	1257	1627	5	15	1077	395	135
28	033	0704.11	1590	33.77	499	670	1053	537	4	8	374	84	67
28	033	0704.12	4064	61.74	941	1571	1555	2509	10	57	2102	186	154
28	033	0704.21	3203	48.89	745	1111	1637	1566	4	31	1083	324	124
28	033	0704.22	2443	39.50	506	936	1478	965	0	27	658	163	117
28	033	0705.21	3477	45.24	753	1170	1904	1573	1	47	925	437	163
28	033	0705.22	4120	37.18	1185	2031	2588	1532	8	46	1116	184	178
28	033	0705.23	7391	58.48	2111	2800	3069	4322	14	245	3329	471	263
28	033	0705.24	3792	36.52	923	1178	2407	1385	6	66	1057	130	126
28	033	0706.10	2715	57.13	822	1168	1164	1551	1	28	1301	108	113
28	033	0706.31	4365	36.98	1620	1832	2751	1614	8	207	1103	145	151
28	033	0706.32	4368	37.84	1166	1513	2715	1653	4	149	1169	198	133
28	033	0706.33	5186	18.97	1215	1401	4202	984	10	163	492	133	186
28	033	0706.34	1733	36.47	405	517	1101	632	1	30	495	52	54
28	033	0706.35	7750	39.55	1812	2267	4685	3065	9	298	2135	282	341
28	033	0707.21	6249	46.22	1783	2003	3361	2888	13	113	2291	264	207
28	033	0707.22	6728	21.89	1568	1771	5255	1473	8	159	812	263	231
28	033	0707.23	5205	53.78	1046	1572	2406	2799	10	97	2333	162	197
28	033	0707.24	2914	40.22	680	964	1742	1172	5	121	832	111	103
28	033	0708.11	6436	51.79	1542	2417	3103	3333	12	123	2640	299	259
28	033	0708.12	5333	52.05	1110	1958	2557	2776	11	70	2138	333	224
28	033	0708.21	5115	30.58	1377	1919	3551	1564	7	78	1004	217	258
28	033	0708.22	4852	43.12	1191	1703	2760	2092	7	53	1413	369	250
28	033	0708.30	7336	41.79	2015	2377	4270	3066	18	172	2263	350	263
28	033	0709.00	5967	19.22	1370	1679	4820	1147	16	21	728	168	214
28	033	0710.01	6040	14.57	1903	2539	5160	880	12	130	384	168	186
28	033	0710.02	4936	14.87	1238	1634	4202	734	3	57	328	155	191
28	033	0711.21	4459	23.46	1188	1590	3413	1046	5	32	350	483	176
28	033	0711.22	2661	13.30	670	849	2307	354	6	28	149	67	104
28	033	0711.23	4115	14.51	1030	1283	3518	597	12	18	327	97	143
28	033	0711.24	3850	39.06	876	1163	2346	1504	2	41	1087	258	116
28	033	0712.00	3190	17.21	749	989	2641	549	6	15	302	100	126

ARKANSAS COUNTY MAP



2020 CENSUS - CENSUS TRACT REFERENCE MAP: Crittenden County, AR



SYMBOL/CHARACTER	SYMBOL	LABEL/TITLE	SYMBOL/CHARACTER	SYMBOL	LEGEND LABEL/TITLE
.....	CANADA
.....	LANGE BERRY 1888
.....	THREE
.....	NEWARK 1912
.....	NEW YORK 16
.....	EMORY
.....
.....
.....
.....

LEGEND

Water bodies shown in blue, county and city limits shown in black. The map shows the boundaries of the county and the city limits of the city of Memphis. The map also shows the boundaries of the census tracts and the city limits of the city of Memphis.

Map of Crittenden County, Arkansas, showing census tracts and city limits. The map includes a scale bar and a north arrow.

Scale: 1 inch = 1 mile

North Arrow

Sheet 1 of 1 PARENT sheet
Total Sheets: 1 (Index 0; Parent 1; Inset 0)
NAME: Crittenden County (033)
1:625,000, County of Crittenden, Arkansas
15-A-AUG-16

Produced by: Esri
Author: Esri
Editor: Esri
Cartographer: Esri
Date: 2016
Scale: 1:625,000
Projection: NAD 83
Datum: NAD 83
Units: Feet
Version: 10.4

All rights reserved and no warranty is made. The boundaries shown on this map are for informational purposes only and do not constitute a guarantee, warranty, or endorsement of any product or service by Esri or any other organization. The boundaries shown on this map are for informational purposes only and do not constitute a guarantee, warranty, or endorsement of any product or service by Esri or any other organization.

Copyright © 2016 Esri. All rights reserved. More information, go to www.esri.com.
Esri, the Esri logo, ArcGIS, the ArcGIS logo, and the Esri logo are either registered trademarks or trademarks of Esri in the United States and/or other countries.
All other marks contained herein are the property of their respective owners.

1:625,000, County of Crittenden, Arkansas



2023 FFIEC Census Report - Summary Census Demographic Information
 State: 05 - ARKANSAS (AR)
 County: 035 - CRITTENDEN COUNTY
 Tract: All Tracts



State Code	County Code	Tract Code	Tract Income Level	Distressed or Underserved Tract	Tract Median Family Income %	2023 FFIEC Est. MSA/MD non-MSA/MD Median Family Income	2023 Est. Tract Median Family Income	2020 Tract Median Family Income	Tract Population	Tract Minority %	Minority Population	Owner Occupied Units	1- to 4-Family Units
05	035	0301.01	Low	No	35.71	\$79,200	\$28,282	\$24,290	1991	94.73	1886	189	767
05	035	0301.02	Low	No	39.77	\$79,200	\$31,498	\$27,050	2805	94.26	2644	692	1382
05	035	0302.01	Moderate	No	73.41	\$79,200	\$58,141	\$49,926	5355	41.12	2202	1005	2040
05	035	0302.02	Upper	No	131.96	\$79,200	\$104,512	\$89,750	3400	33.00	1122	1309	1423
05	035	0303.01	Moderate	No	76.26	\$79,200	\$60,398	\$51,865	3034	77.52	2352	622	984
05	035	0303.02	Low	No	27.99	\$79,200	\$22,168	\$19,038	2741	88.18	2417	236	655
05	035	0305.03	Middle	No	84.24	\$79,200	\$66,718	\$57,292	1400	98.14	1374	204	824
05	035	0306.01	Moderate	No	65.24	\$79,200	\$51,670	\$44,375	759	60.21	457	148	390
05	035	0306.02	Moderate	No	55.75	\$79,200	\$44,154	\$37,917	3696	66.94	2474	733	1609
05	035	0307.01	Moderate	No	77.71	\$79,200	\$61,546	\$52,852	886	33.97	301	345	502
05	035	0307.02	Moderate	No	69.53	\$79,200	\$55,068	\$47,292	879	77.25	679	220	381
05	035	0307.03	Low	No	36.07	\$79,200	\$28,567	\$24,535	906	33.00	299	169	465
05	035	0308.03	Upper	No	136.73	\$79,200	\$108,290	\$92,988	1975	42.94	848	658	721
05	035	0308.04	Middle	No	117.65	\$79,200	\$93,179	\$80,016	4335	59.38	2574	1055	1473
05	035	0308.05	Middle	No	107.45	\$79,200	\$85,100	\$73,080	3396	41.67	1415	566	817
05	035	0308.06	Upper	No	177.43	\$79,200	\$140,525	\$120,673	4209	38.25	1610	1056	1254
05	035	0308.07	Middle	No	113.80	\$79,200	\$90,130	\$77,396	1682	53.27	896	399	640
05	035	0310.00	Moderate	No	69.51	\$79,200	\$55,052	\$47,273	1211	46.99	569	342	588
05	035	0311.00	Moderate	No	71.89	\$79,200	\$56,937	\$48,897	2080	82.36	1713	533	1105
05	035	0312.00	Low	No	34.21	\$79,200	\$27,094	\$23,269	1423	97.19	1383	325	685

* Will automatically be included in the 2024 Distressed or Underserved Tract List

2023 FFIEC Census Report - Summary Census Housing Information

State: 05 - ARKANSAS (AR)

County: 035 - CRITTENDEN COUNTY

Tract: All Tracts



State Code	County Code	Tract Code	Total Housing Units	1- to 4-Family Units	Median House Age (Years)	Inside Principal City?	Owner Occupied Units	Vacant Units	Owner Occupied 1- to 4- Family Units	Renter Occupied Units
05	035	0301.01	1117	767	52	No	189	204	189	724
05	035	0301.02	1433	1382	48	No	692	86	692	655
05	035	0302.01	2539	2040	56	No	1005	196	970	1338
05	035	0302.02	1423	1423	38	No	1309	37	1309	77
05	035	0303.01	1147	984	39	No	622	88	622	437
05	035	0303.02	1138	655	23	No	236	65	236	837
05	035	0305.03	861	824	53	No	204	271	204	386
05	035	0306.01	390	390	35	No	148	146	148	96
05	035	0306.02	2026	1609	33	No	733	483	733	810
05	035	0307.01	505	502	28	No	345	78	345	82
05	035	0307.02	386	381	29	No	220	42	220	124
05	035	0307.03	465	465	36	No	169	114	169	182
05	035	0308.03	721	721	23	No	658	0	658	63
05	035	0308.04	1828	1473	18	No	1055	209	1055	564
05	035	0308.05	1353	817	35	No	566	140	566	647
05	035	0308.06	1288	1254	23	No	1056	93	1056	139
05	035	0308.07	658	640	20	No	399	63	399	196
05	035	0310.00	640	588	33	No	342	94	342	204
05	035	0311.00	1158	1105	45	No	533	217	533	408
05	035	0312.00	714	685	47	No	325	143	325	246

2023 FFIEC Census Report - Summary Census Income Information

State: 05 - ARKANSAS (AR)

County: 035 - CRITTENDEN COUNTY

Tract: All Tracts



State Code	County Code	Tract Code	Tract Income Level	2020 MSA/MD Statewide non-MSA/MD Median Family Income	2023 FFIEC Est. MSA/MD non-MSA/MD Median Family Income	% Below Poverty Line	Tract Median Family Income %	2020 Tract Median Family Income	2023 Est. Tract Median Family Income	2020 Tract Median Household Income
05	035	0301.01	Low	\$68,008	\$79,200	32.62	35.71	\$24,290	\$28,282	\$22,552
05	035	0301.02	Low	\$68,008	\$79,200	30.67	39.77	\$27,050	\$31,498	\$31,264
05	035	0302.01	Moderate	\$68,008	\$79,200	15.84	73.41	\$49,926	\$58,141	\$36,972
05	035	0302.02	Upper	\$68,008	\$79,200	3.57	131.96	\$89,750	\$104,512	\$78,542
05	035	0303.01	Moderate	\$68,008	\$79,200	22.52	76.26	\$51,865	\$60,398	\$37,585
05	035	0303.02	Low	\$68,008	\$79,200	55.81	27.99	\$19,038	\$22,168	\$18,465
05	035	0305.03	Middle	\$68,008	\$79,200	20.86	84.24	\$57,292	\$66,718	\$32,708
05	035	0306.01	Moderate	\$68,008	\$79,200	35.12	65.24	\$44,375	\$51,670	\$21,667
05	035	0306.02	Moderate	\$68,008	\$79,200	32.05	55.75	\$37,917	\$44,154	\$33,358
05	035	0307.01	Moderate	\$68,008	\$79,200	16.03	77.71	\$52,852	\$61,546	\$51,563
05	035	0307.02	Moderate	\$68,008	\$79,200	39.66	69.53	\$47,292	\$55,068	\$44,375
05	035	0307.03	Low	\$68,008	\$79,200	47.72	36.07	\$24,535	\$28,567	\$35,433
05	035	0308.03	Upper	\$68,008	\$79,200	4.13	136.73	\$92,988	\$108,290	\$77,708
05	035	0308.04	Middle	\$68,008	\$79,200	7.01	117.65	\$80,016	\$93,179	\$77,551
05	035	0308.05	Middle	\$68,008	\$79,200	8.72	107.45	\$73,080	\$85,100	\$55,664
05	035	0308.06	Upper	\$68,008	\$79,200	4.07	177.43	\$120,673	\$140,525	\$116,283
05	035	0308.07	Middle	\$68,008	\$79,200	17.55	113.80	\$77,396	\$90,130	\$50,156
05	035	0310.00	Moderate	\$68,008	\$79,200	15.77	69.51	\$47,273	\$55,052	\$43,750
05	035	0311.00	Moderate	\$68,008	\$79,200	29.12	71.89	\$48,897	\$56,937	\$38,512
05	035	0312.00	Low	\$68,008	\$79,200	41.10	34.21	\$23,269	\$27,094	\$21,078

2023 FFIEC Census Report - Summary Census Population Information

State: 05 - ARKANSAS (AR)

County: 035 - CRITTENDEN COUNTY

Tract: All Tracts



State Code	County Code	Tract Code	Tract Population	Tract Minority %	Number of Families	Number of Households	Non-Hisp White Population	Tract Minority Population	American Indian Population	Asian/Hawaiian/Pacific Islander Population	Black Population	Hispanic Population	Other Population/Two or More Races
05	035	0301.01	1991	94.73	566	913	105	1886	2	12	1775	47	50
05	035	0301.02	2805	94.26	960	1347	161	2644	5	7	2562	40	30
05	035	0302.01	5355	41.12	1233	2343	3153	2202	12	18	1678	275	219
05	035	0302.02	3400	33.00	938	1386	2278	1122	9	42	884	51	136
05	035	0303.01	3034	77.52	604	1059	682	2352	3	8	2228	55	58
05	035	0303.02	2741	88.18	532	1073	324	2417	10	2	2296	51	58
05	035	0305.03	1400	98.14	345	590	26	1374	4	1	1314	12	43
05	035	0306.01	759	60.21	133	244	302	457	4	0	416	15	22
05	035	0306.02	3696	66.94	1042	1543	1222	2474	9	23	2262	73	107
05	035	0307.01	886	33.97	317	427	585	301	3	2	223	43	30
05	035	0307.02	879	77.25	230	344	200	679	2	1	616	26	34
05	035	0307.03	906	33.00	216	351	607	299	5	5	136	95	58
05	035	0308.03	1975	42.94	466	721	1127	848	2	39	681	61	65
05	035	0308.04	4335	59.38	1071	1619	1761	2574	16	73	2160	188	137
05	035	0308.05	3396	41.67	636	1213	1981	1415	7	55	1108	103	142
05	035	0308.06	4209	38.25	1052	1195	2599	1610	6	37	1264	130	173
05	035	0308.07	1682	53.27	397	595	786	896	0	5	776	47	68
05	035	0310.00	1211	46.99	390	546	642	569	11	1	451	70	36
05	035	0311.00	2080	82.36	505	941	367	1713	1	6	1636	33	37
05	035	0312.00	1423	97.19	322	571	40	1383	4	2	1338	13	26